

**4<sup>th</sup> General Assembly of the Coalition for African Rice Development  
(CARD)**

*8 – 9 November 2011, Kampala, Uganda*

---

**National Rice Development  
Strategy (NRDS)  
of the Central African Republic**

***Dr David KADEKOY-TIGAGUE***

***Focal Point***

# List of Abbreviations

<b>Abbreviation</b>	<b>Full Name</b>
<b>CAR</b>	<b>Central African Republic</b>
<b>ICRA</b>	<b>Central African Institute of Agronomic Research</b>
<b>MADR</b>	<b>Ministry of Agriculture and Rural Development</b>
<b>DSRP</b>	<b>Strategy Document on Poverty Reduction</b>
<b>SDRASA</b>	<b>Rural Development, Agriculture and Food Security Strategy</b>
<b>PNIASA</b>	<b>National Investment Programme for Agriculture and Food Security</b>
<b>CAADP</b>	<b>Comprehensive African Agriculture Development Programme</b>
<b>NEPAD</b>	<b>New Partnership for Africa's Development</b>

# Overall state of rice growing in the CAR

Country Profile Related to Rice: Central African Republic (CAR)										
<b>Total area:</b> 623,000 km <sup>2</sup>	<b>Responsible Ministry:</b> Ministry of Agriculture and Rural Development									
<b>Population (2010):</b> 4.479.444 inh.	<b>Research institute:</b> Central African Institute of Agronomic Research (ICRA)									
<b>Population density:</b> 7.2 person/km <sup>2</sup>	<b>Agr. Policy Paper:</b> Strategy for Rural Development, Agriculture and Food Security (SDRASA)									
<b>Population growth rate ('97-'10 average):</b> 2.5%										
<b>Poverty rate (1990-2008 latest):</b> 62%										
<b>GDP (2010):</b> 212,000,000 US\$	<b>Domestic supply of staple foods (2008):</b> 568 (*000 ton)									
<b>GDP per capita (2010):</b> 475 US\$	<b>Domestic supply of rice (2008):</b> 33 (*000 ton)									
<b>GDP composition by sector (2010):</b>	<b>Percentage of rice in staple foods (2008):</b> 6%									
<b>Agriculture:</b> 50.2%	<b>Self-sufficiency ratio of staple food (2008):</b> %									
<b>Industry:</b> 18.1%	<b>Self sufficiency ratio of rice (2008):</b> 72%									
<b>Services:</b> 31.7%	<b>Import value of staple foods (2008):</b> US\$									
<b>Agric. population rate (2010):</b> 70%	<b>Import value of rice (2008):</b> 96,000 US\$									
Rice Production, Imports and Food Aid (*000 ton)										
	2000	2001	2002	2003	2004	2005	2006	2007	2008	
Area harvested (*000ha)	14	14	14	14.5	16	23	14	15	16.5	
Yield (ton/ha)	1.65	1.8	1.96	2.05	1.99	2.00	2.00	2.20	2.30	
Production as paddy (ton)	23100	25300	27400	29700	31900	46200	28000	33000	38500	
Imports (milled rice equiv.)	2064	4198	2002	2008	1443	492	N.A	N.A	N.A	
Food aid in rice (milled)										
Supply of Rice and Consumption										
	2000	2001	2002	2003	2004	2005	2006	2007	2008	
Domestic supply quantity	16.2	17.71	19.2	20.8	22.4	32.3	19.6	23.1	27	
Food	16.2	17.71	19.2	20.8	22.4	32.3	19.6	23.1	27	
Consumption per capita	4.60	4.70	5.03	5.34	5.68	8.08	4.84	5.63	6.30	
Note: *000 ton for Domestic supply quantity and Food; kg/year for per capita consumption										

## Rice's place in national policies (1/2)

### 1. Importance of rice to the national economy:

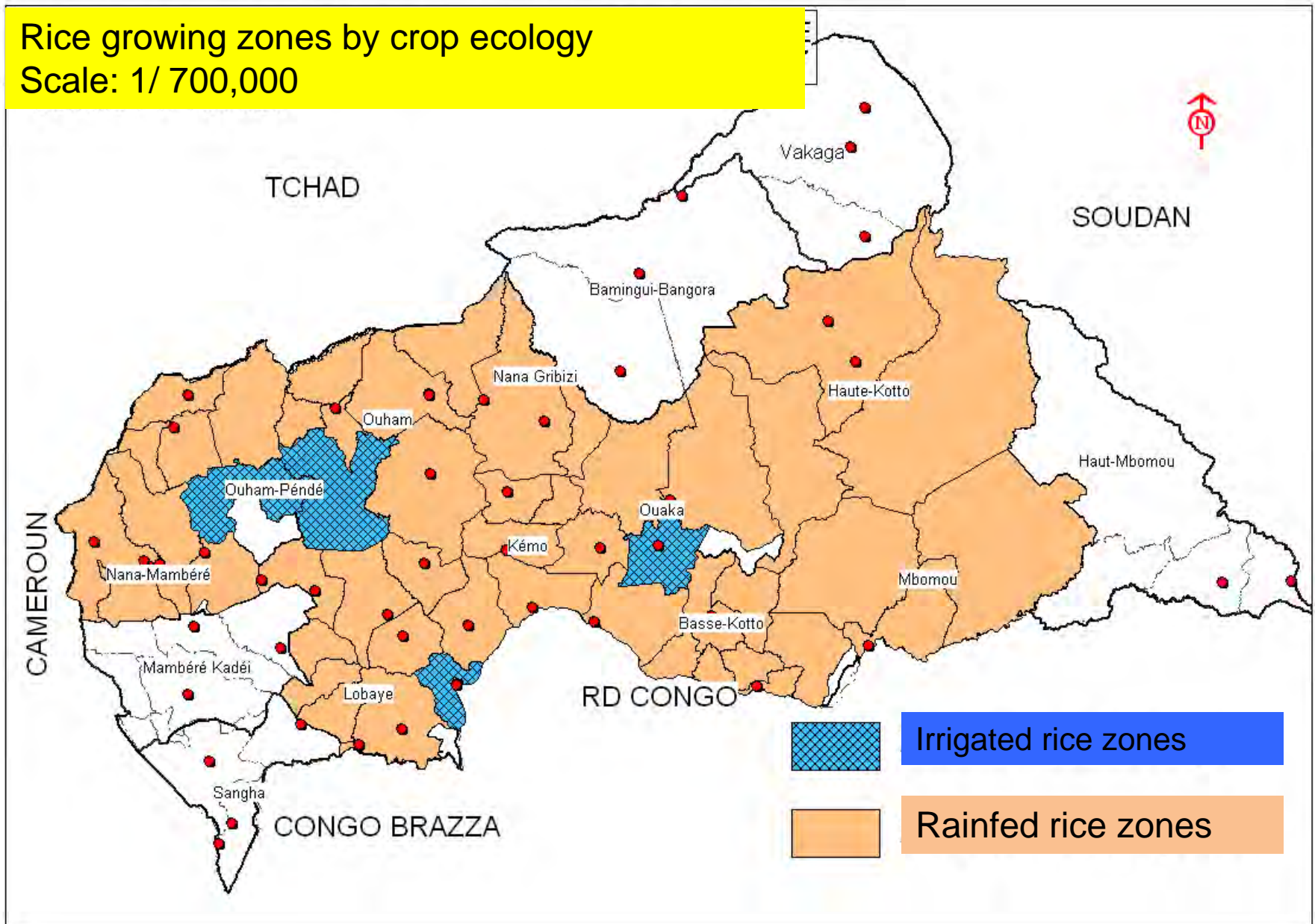
- F Generates more than 11 billion Francs CFA for producers;
- F Contributes to food security and to reducing hunger;
- F Provides work in various related activities (processing, transport etc.).

## Rice's place in national policies (2/2)

- 2. Policy and national strategy fall within the SDRASA, the DSRP-II and the PNIASA, covering:**
  - F Production, multiplication, distribution and certification of improved seed;**
  - F Strengthening the operational capability of the research and extension services;**
  - F Provision of inputs and farm machinery;**
  - F Revitalise draught animal cultivation and machinery use;**
  - F Improvement of technical guides to production and farm management;**
  - F Improvement of produce processing, conditioning and storage;**
  - F Local market development and distribution network organisation;**
  - F Development of cropping land and small-scale irrigation;**
  - F Ending the isolation of production zones from markets;**
  - F Support for developing a credit system.**

# Rice growing zones in the CAR

Rice growing zones by crop ecology  
Scale: 1/ 700,000



# Rice Production (Tonnes)

<b>Crop</b>	<b>2008</b>	<b>2009</b>	<b>2010</b>	<b>Growth ('10 / '08)</b>
Rice (Paddy)	57,000	59,850	62,843	10%
Maize	74,892	79,835	85,104	13.6%
Cassava	676,692	728,121	783,458	16%
Groundnut	116,000	125,744	136,306	17.5%
Sorghum	50,000	53,000	56,180	12.4%
Sesame	24,500	25,896	27,400	12%

# Production Target & Priority Agro-Ecologies (revised)

## Rice Production Area; Yield & Production in 2008 and Future Targets by Agroecology

Year	Rainfed rice			Lowland rice			Irrigated rice			Total		
	Area (‘000 ha)	Yield (t/ha)	Prod. (‘000 t)	Area (‘000 ha)	Yield (t/ha)	Prod. (‘000 t)	Area (‘000 ha)	Yield (t/ha)	Prod. (‘000 t)	Area (ha)	Prod. paddy	Prod. rice
2008	16.5	2.33	38.5	5	2.5	12.5	2	3.0	6.0	23.5	57	34.2
2013	17.8	2.51	44.7	5.4	2.7	14.6	2.2	3.2	7.04	25.3	66.2	39.7
2018	19.2	2.72	52.2	5.8	2.9	16.8	2.4	3.5	8.40	27.3	77.3	50.2



# Targets for Capacity Development of Human Resources

## Number of Researchers, Technicians and Extension Workers in 2008 and Targets

*\*for each special area, if possible*

Year	Scientists			Research technicians			Extension Agents		
	Total	Rice specialist s (full- time)	Rice specialist s (part- time)	Total	Rice specialist s (full- time)	Rice specialist s (part- time)	Total	Rice specialist s (full- time)	Rice specialist s (part- time)
2008	10	6	4	8	4	4	27	15	12
2009	15	10	5	20	15	5	43	38	15
2010	20	15	5	40	30	10	91	68	23

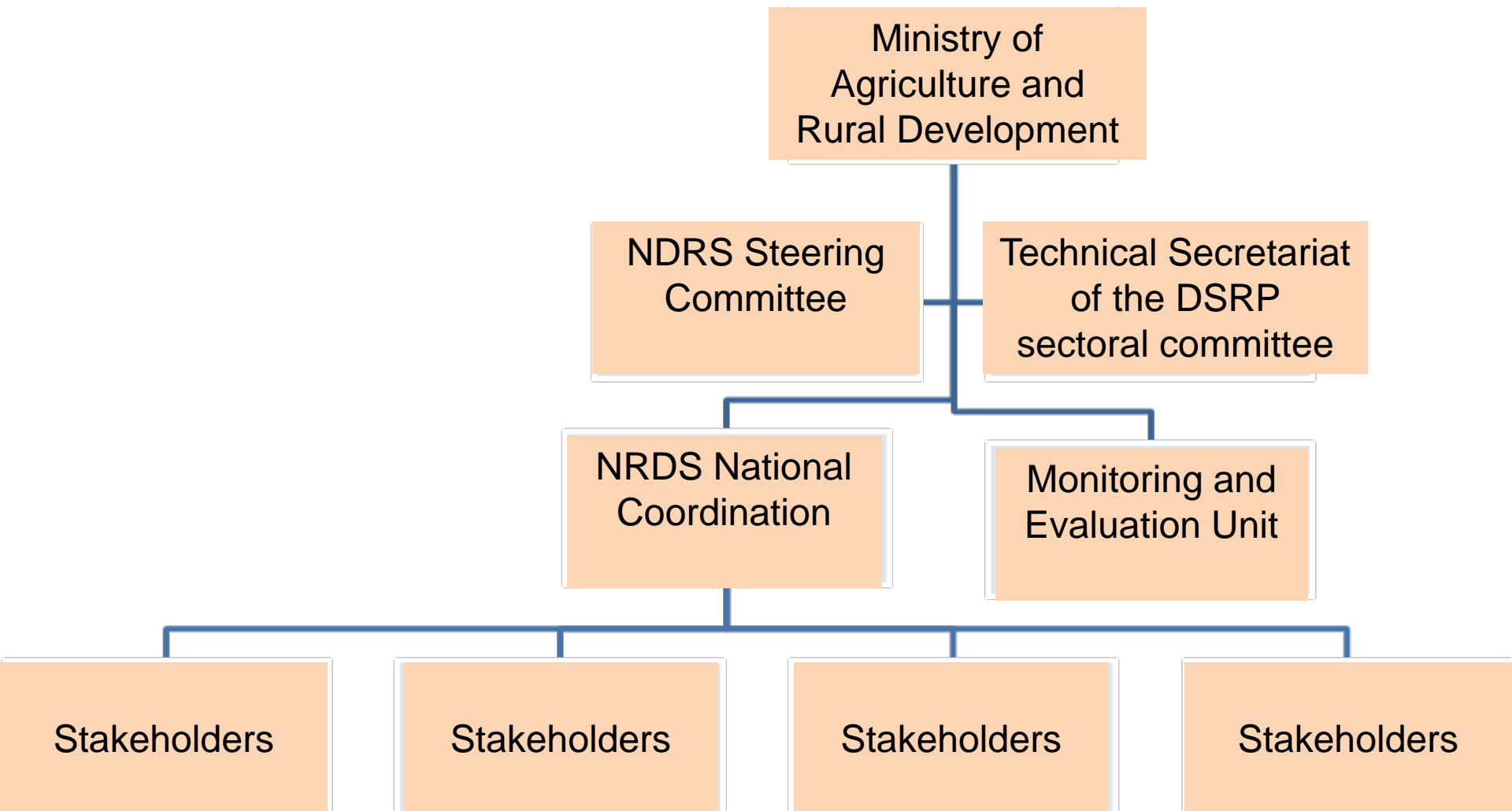
## Development priorities for the rice sub-sector (1/2)

Sub-sector	Priority actions
Seed	<ul style="list-style-type: none"> <li>- Production of basic seed by ICRA;</li> <li>- Production of certified seed (REPROSEM; private sector);</li> <li>- Collection and development of high performance varieties.</li> </ul>
Inputs	<ul style="list-style-type: none"> <li>- Support for importing and enabling access to inputs;</li> <li>- Improvement of transport, storage and reconditioning infrastructures.</li> </ul>
Irrigation/water management	<ul style="list-style-type: none"> <li>- Redevelopment of aging irrigation infrastructure;</li> <li>- Development of simple low-cost irrigation water control systems</li> </ul>
Agricultural equipment	<ul style="list-style-type: none"> <li>- Support to enable access to improved farming equipment;</li> <li>- Revitalising draught animal use;</li> <li>- Promotion of adapted types of mechanisation (power tillers, mowing machines etc.);</li> <li>- Strengthening the partnership with the private sector to spread the availability of appropriate farm implements;</li> <li>- Promote the manufacture and adaptation of equipment for small and medium-size stakeholders along the value chain.</li> </ul>

## Development priorities for the rice sub-sector (2/2)

<b>Sub-sector</b>	<b>Priority Actions</b>
Technology dissemination	<ul style="list-style-type: none"><li>- Develop and disseminate technology along the rice value chain;</li><li>- Focus on techniques for improvement and maintenance of soil fertility, and for integrated disease management;</li><li>- Development of improved rice-based crop systems.</li></ul>
Access to markets and credit	<ul style="list-style-type: none"><li>- Identification credit sources for stakeholders;</li><li>- Adaptation of current and previous credit systems to improve their adoption;</li><li>- Provide credit for rice marketing;</li><li>- Improve access in the production zones and to markets.</li></ul>
Quality improvement	<ul style="list-style-type: none"><li>- Reduce post-harvest losses;</li><li>- Improve rice quality through upgraded processing plants;</li><li>- Better marketing through promotion of local rice consumption;</li><li>- Build appropriate infrastructure for storing rice and rice-based processed products.</li></ul>

# Institutional framework for NRDS governance



## List of NRDS Taskforce members

Name and first name	Job title	Organisation
KADEKOY-TIGAGUE David	Scientific Coordinator	Central African Institute of Agronomic Research (ICRA)
BENINGA Jérémie	Director of Operations	Central African Agricultural Development Agency (ACDA)
GBARAFIO Joseph	Director General of Regional Services	MADR
YAKOTA Clarisse	Director for Small and Medium Businesses	Ministry of Trade
MBETID BESSANE Emmanuel	Dean of the Faculty of Economic Sciences	University of Bangui
NDELAFEÏ Célestin	Head of Monitoring and Evaluation	ONG CARITAS
MARANDJI George	Chairman	Sakaï Rice Producers' Organisation
KONGBO GAZOUA Simplice	Inputs Supplier	PROCHIMIE
ALI ABBAKAR	Trader	Traders' Association
OGOOU-GOLET Nina	Customer Executive	SOFIA CREDIT
KONDAYEN Igor Arsène	Director	ICRA

# **NRDS planning, implementation and M&E challenges**

- Ø Commitment and ownership by senior staff in the technical ministries implementing the NRDS;**
- Ø Submissions to technical and financial partners for mobilisation of the funding needed for NRDS programmes/projects;**
- Ø Firming up the undertakings given by the Government to allocate funds for the agricultural sector under the CADDP/NEPAD framework.**

**Thank you for your kind attention**