

# Action Plan for Rice Seed Production in Uganda

*Prepared by:*

**Tom K. Mugisa**

*Ministry of Agriculture, Animal Industry and Fisheries*

*Tsukuba, Japan  
September, 2012*

## Action Plan Outline

- Introduction
- Challenges (**problems**)
- Suggested solutions (**targets**)
- Human resources (**staff**)
- Budget implications (**funds**)
- Farmers organisation (**cooperatives**)
- Summary

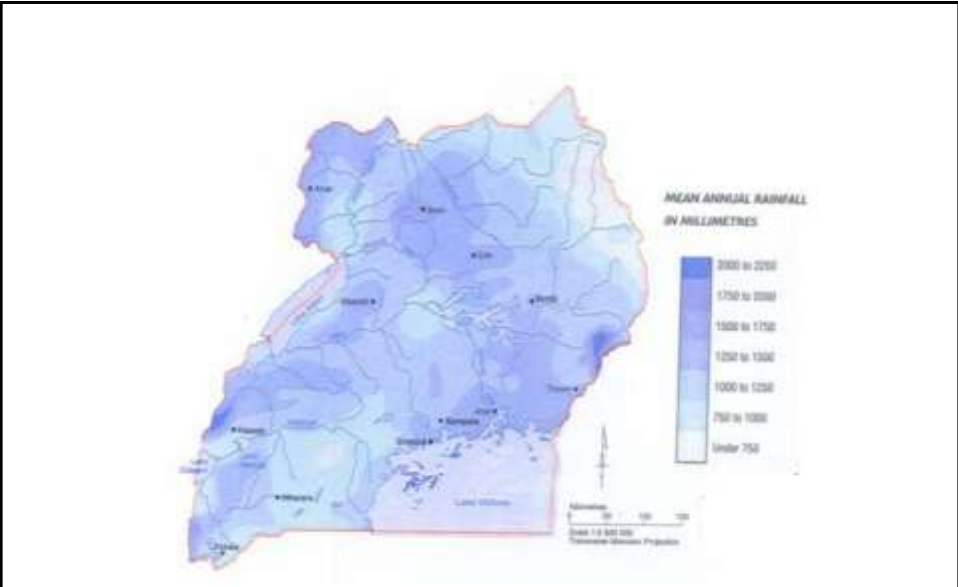


Figure 1: Rainfall pattern in Uganda

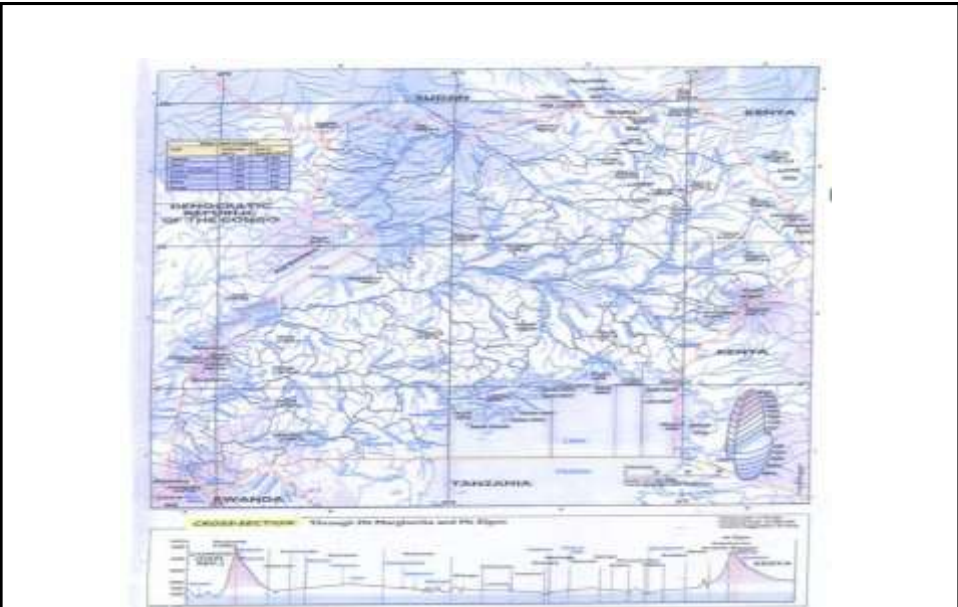


Figure 2: Uganda Landforms and drainage

## Introduction - 1

- Rice introduced in **1904**. Formal production since **1942** to feed WWII soldiers
- Seed system was established in **1968**
- System **liberalised in 2000** providing for any - one/body to multiply **foundation** and/or **certified** seed
- **National Seed Certification Service** regulates quality
- Variety released by **National Variety Release Committee**



## Introduction - 2

- Consumption outstripped production
- Demand outstripped supply
- So, **grain sold as seed!** – leading to poor grain/disappointed farmers
- Private sector is still unable to train and/or increase growers
- Private sector is organised (*Uganda Seed Traders Association*)



## Uganda rice seed production process

### *Areas of focus:*

- Production of Breeder seed
- Production of Foundation seed
- Production of Certified seed
- Distribution of Certified Seed to rice farmers



## Challenges of producing breeder seed

- Inadequate numbers of qualified breeders
- Weak Institutions in terms of funding and infrastructure
- Limited zone specific varieties (mature early, yield higher, resist - diseases, pests & drought) with consumer preferences (good milling, cooking qualities, taste & aroma)
- Inadequate interaction between breeders and stakeholders

## Seed production targets

Type	Annual Target	
	2013	2018
Varieties (number)	8	8
Breeder seed (Kg)	20	20
Foundation Seed (MT)	300	300
Certified seed (MT)	400	400

- 2012: National demand for certified seed:- 20,000 MT per year.
- 2012: Foundation seed :- 200 MT (10 %).
- USD 500,000 : Estimated annual cost of seed production and distribution – excluding machinery and equipment.

## Human resource challenges

- Low funding to rice research and extension
- Low motivation and limited facilitation for local government extension staff
- Limited specialized knowledge in rice production among researchers and extension staff
- Limited staff in development of rice sub-sector

## **Actions to address human resource challenges**

Human resource	Annual target	
	2013	2018
On-job training /short courses on Seed production (% staff)	50	100
Researchers and Technicians (number)	1 MSc. 6 Certificates / Diploma's	1 PHD, 2 MSc., 11 Certificates /Diploma's
Farmers (%) producing certified seed	7	10

## **Action on funding of seed production**

- Strengthen the alignment of rice production to the CAADP process in the country
- Ensure that the budget for rice seed production is integrated into national and local government spending plans
- Undertake continuous engagement with other stakeholders especially the private sector
- Working with partners (Jica, IDA, IRR....)

## Farmer organisation challenges and actions

### *Challenges:*

- Farmer groups are still weak and often collapse after accessing agricultural support (e.g. credit)

### *Action:*

- Empower farmers with skills to participate in seed multiplication/distribution, strengthen supervision and audit services



*Thank you*  
*Domo*