

## Next Step: CARD 2<sup>nd</sup> Regional Workshop for Promotion of Agricultural Mechanisation

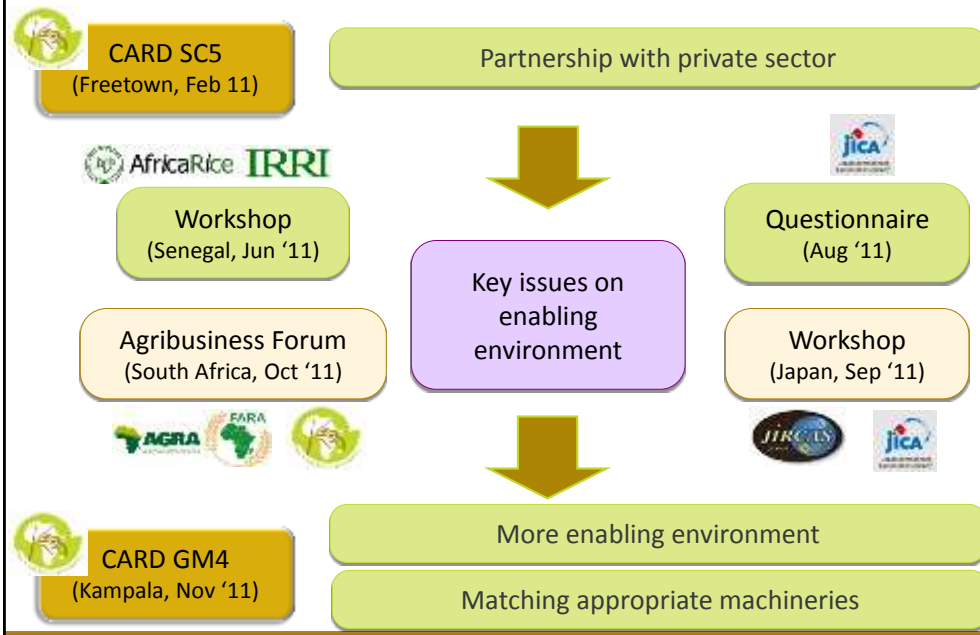
24 October 2012, Nairobi, Kenya

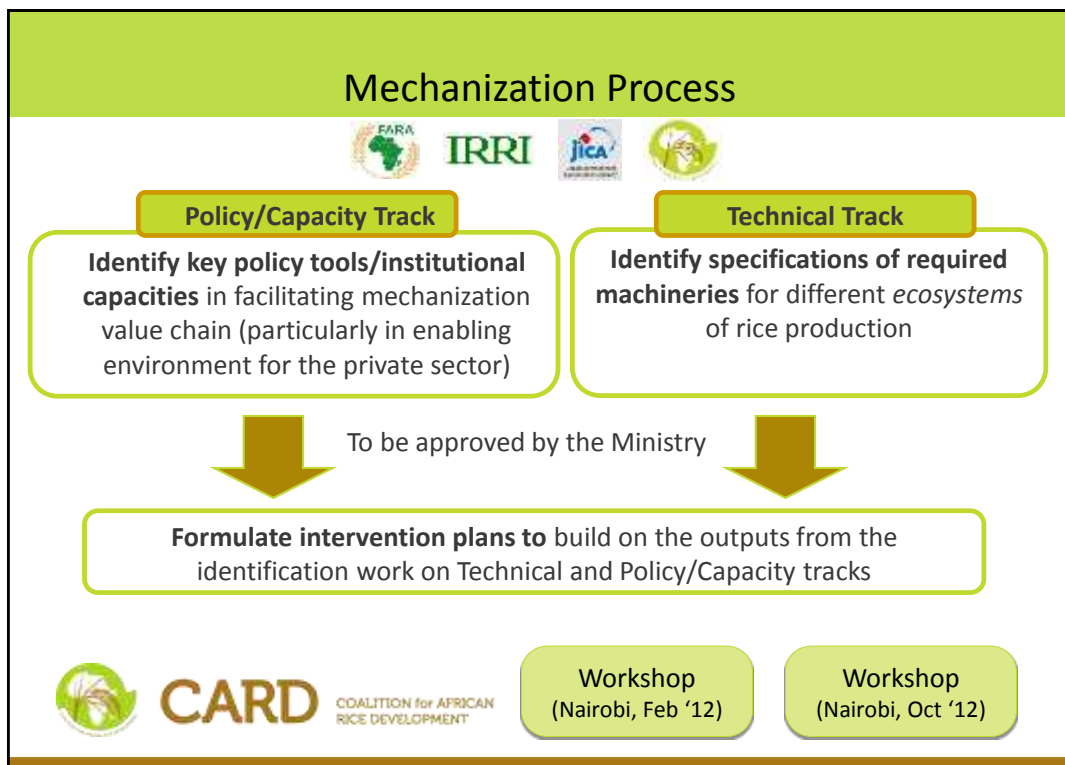


**CARD**

COALITION for AFRICAN  
RICE DEVELOPMENT

### Background: Private Sector and Mechanization





- ### What We have Done in the Last Workshop (1) (Feb. '12)
- 1) Identified key stakeholders to involve respectively in technical & policy tracks and prepare a full list.
  - 2) Learned guiding principles of identifying appropriate machineries and adopt them into each step of the process (when, what, with whom and how).
  - 3) Identified (drafted) policy tools which try to provide enabling environment on mechanisation for private sector players. Examine each of them in a given format.
  - 4) Exchanged experiences in institutional arrangements respectively in technical & policy tracks. Discussed promising arrangements in each country.
  - 5) Prepared road map of the process for both technical & policy tracks to present at 'one-day stakeholders' launch meeting".
- 
<http://www.riceforafrica.org/meetings/workshop/ag-mechanisation-ws>

## What We have Done in the Last Workshop (2) (Feb. '12)

<http://www.riceforafrica.org/meetings/workshop/ag-mechanisation-ws>

Item	Hard Copy File	Presentation	Doc No.
<b>Manual / Manuel</b>	Mechanisation Process Manual	MS Word ( <a href="#">English</a> / <a href="#">French</a> )	A
<b>Policy Tools</b>	Policy Tools and Related Actions	MS Word ( <a href="#">English</a> / <a href="#">French</a> )	B
<b>Policy Tool Analysis Form</b>	Policy Tool Analysis Sheet	MS Word ( <a href="#">English</a> / <a href="#">French</a> )	C
<b>Analytical Tool: Matching Farm Equipment Farm Size</b>	Matching Farm Equipment to Farm Size	MS Excel ( <a href="#">English</a> )	D
<b>Valuables: Matching Farm Equipment Farm Size</b>	Components of Costs involved in owning and using Farm Machineries and Implements	MS Excel ( <a href="#">English</a> )	E



**CARD**

COALITION for AFRICAN RICE DEVELOPMENT

## What We have Done in this Workshop (1) (Oct. '12)

- 1) Technical Inputs and introduction of new elements:
  - a) Developing Agricultural Machinery Industrial Sector in Africa depending on (UNIDO)
  - b) Social and technical implication in improving post-harvest operations - linking value chain (JICA)
  - c) Comparative study on Cost Analysis for mechanization (CARD)
  - d) Introduction of the Analysis (Comparative study) on Regional Processing (CARD)



**CARD**

<http://www.riceforafrica.org/meetings/workshop/ag-mechanisation-ws2>  
COALITION for AFRICAN RICE DEVELOPMENT

## What We have Done in this Workshop (2) (Oct. '12)

2) Stocktaking the progress made by each country, shared/ peer-reviewed the experiences and discuss the way forward:

a) TECHNICAL TRACK

- TT-1: Listing of machineries to be manufactured domestically (short, medium, long terms)
- TT-2: Testing& Certification: Identify machineries, implements and technical capacity needs (Legal Framework/ Infra/ Human Resources)
- TT-3: Human Resources: List human resources and training needs of the stakeholders focusing on Ag machinery supply chain
- TT-4: Matching of equipment and Selection of machineries and implements, Cost analyses of critical field operations (tillage, harvest, milling & others).

<http://www.riceforafrica.org/meetings/workshop/ag-mechanisation-ws2>



**CARD**

COALITION for AFRICAN  
RICE DEVELOPMENT

## What We have Done in this Workshop (3) (Oct. '12)

2) Stocktaking the progress made by each country, shared/ peer-reviewed the experiences and discuss the way forward:

b) POLICY TRACK

- PT\_1: Policy tools enabling environments for private sector incl. local manufacturing sector, dealers and service providers
- PT\_2: Institutional/ Organizational requirements in implementing technical tracks (e.g. testing)
- PT\_3: Policy Tools for issues identified from TT\_4milling & others).

3) Upgraded the road map of the process for both technical & policy tracks.



**CARD**

COALITION for AFRICAN  
RICE DEVELOPMENT

## Way ahead - Outputs

- 1) Follow-up of Manual and this Workshop (.)
  - a) TECHNICAL TRACK
    - Scenarios for domestic manufacturing/ assembling (TT1, A. Manual 2.)
    - Testing & Certification (TT2, A. Manual 3.)
    - Human Resource & Capacity Needs (TT3, A. Manual 6.)
    - **Appropriate machinery selection** (TT4, A. Manual 4., D.&E. MS Excel) (\*)
  - b) POLICY TRACK
    - **List of Policy Tools** - enabling environment for private sector (PT1/ PT2/ PT3, A. Manual 1., B. Policy Tool Matrix, C. Policy Tools Analysis Sheet) (\*)
    - Institutional/ Organisational arrangements (PT2, A. Manual 5.)



**CARD** COALITION for AFRICAN RICE DEVELOPMENT

(\*) Report submitted by 15 Dec

## Way ahead - Process

- Proposed process:
  - a) Drafting & Preparation by Core Working Group (CWG)
  - b) Launching (1<sup>st</sup> Round of Consultation) with wider-stakeholders
    - Presentation at **Video Conference** for comments (**mid Dec. '12**)
    - **Report** to the CARD Secretariat (**By 15 Dec.**) for CARD GM5 (Feb. '13)
  - c) Individual interviews with the identified institutions/ personnel
  - d) Revision by CWG
  - e) 2<sup>nd</sup> Round of Consultation with wider-stakeholders



**CARD** COALITION for AFRICAN RICE DEVELOPMENT

## Mechanisation Process – Timeline

Opportunities for the presentations [submission of the report];

- CARD GM5 – Feb 2013 [mid December 2012] and
- TICAD V – June 2013 [end April 2013]



**CARD**

COALITION for AFRICAN  
RICE DEVELOPMENT

Thank you.  
Merci beaucoup.



**CARD**

COALITION for AFRICAN  
RICE DEVELOPMENT