

# Current situation of seed multiplication and distribution in Thailand



Anchalee Prasertsak

Bureau of Rice Research and Development  
Rice Department  
chaleim@yahoo.com

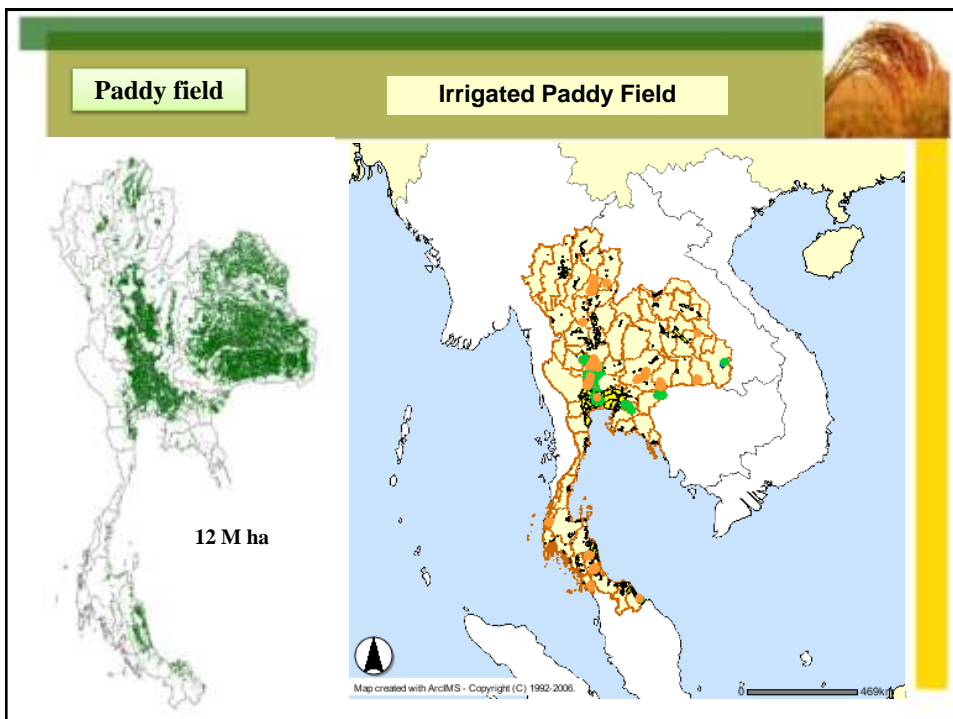
CARD Seminar via video conferencing  
Seminar #1  
September 19, 2012

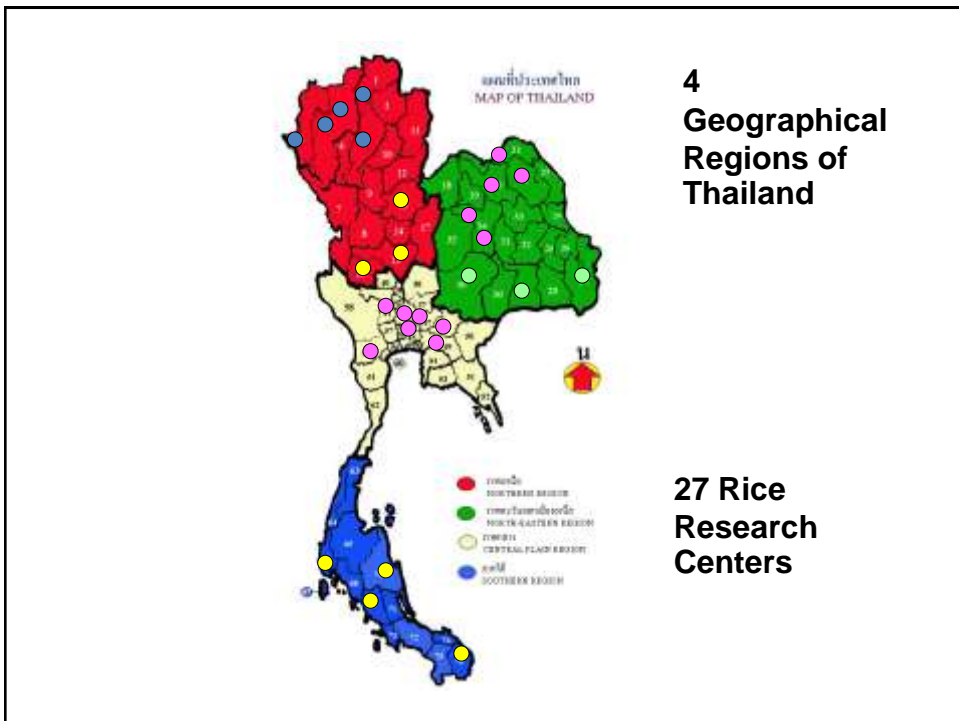
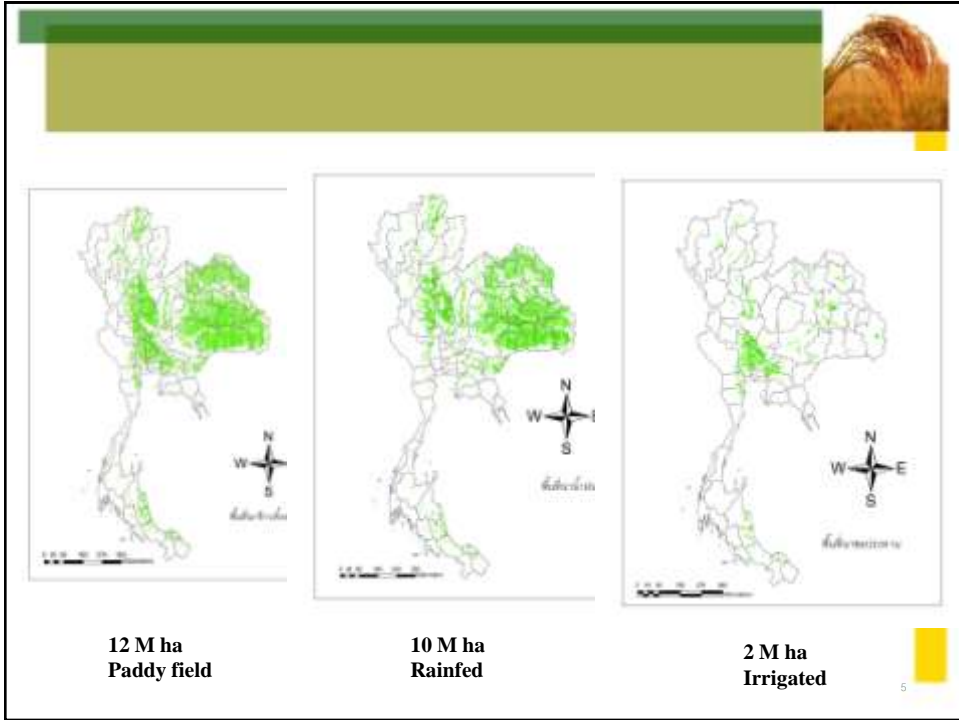
## Rice Cultivation in Thailand


- Rice is the most important crop in Thailand. The general policy for rice production in Thailand is to produce rice for self-sufficiency and surplus for export.
- The total cultivation area of rice production is about 12 million hectares, representing approximately 50 percent of the cropped land area. They are divided into 10 million hectares for the main crop rice and 2 million hectares for the second crop rice.



- More than 80 percent of the rice growing area in Thailand is under rainfed conditions where rice is usually grown only once a year in the wet season, that the monsoon rain is the single source of water supply for rice cultivation.
- Less than 20 percent of the area is under irrigated conditions where rice can be grown not only in the wet season but also in the dry season because irrigation water supply is available.
- Major production comes from the wet season rice crop with the supplement of the dry season crop.







Region (2011)	Planting Area (Million Ha.)	Total Production (Million Tons)	Average Yield (Tons/Ha.)
Northeast	6.8	13.2	2.0
North	3.0	8.5	3.0
Central	2.4	8.2	3.5
South	0.3	0.6	2.4
<b>Total</b>	<b>12</b>	<b>30</b>	<b>2.5</b>

### Seed Production volume by variety in the formal sector

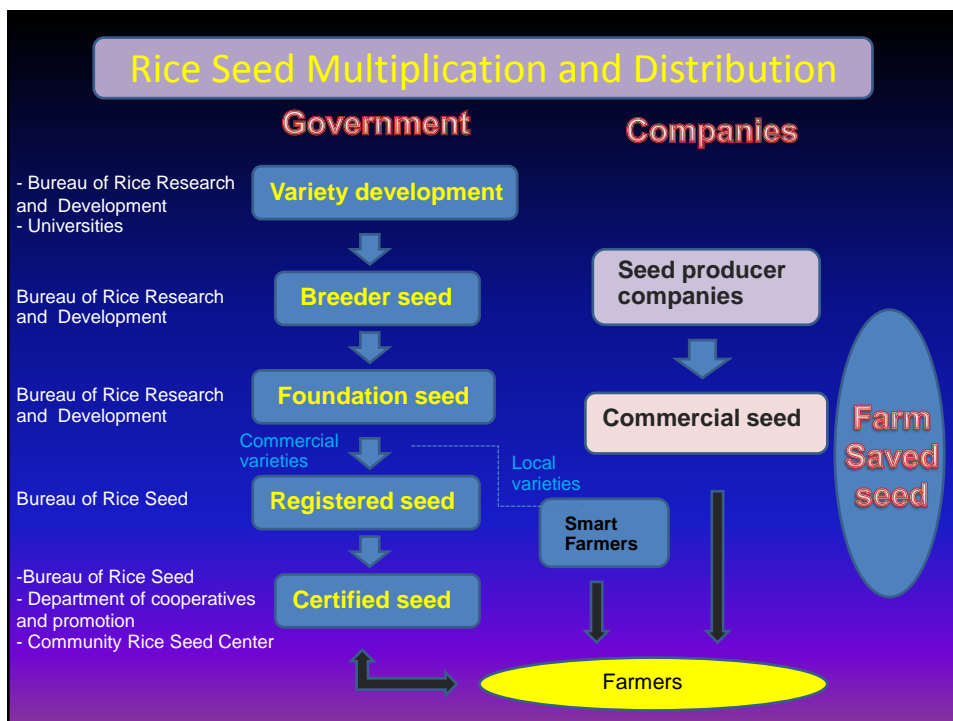
- Production of registered seed and certified seed of key varieties in the government sector (year 2011)

Variety	Amount of registered seed (t)	Amount of certified seed
KDML105	17,172	10,602
PSL2	8,128	4,995
CNT1	5,271	7,133
PTT1	4,769	5,216
RD6	3,210	537
SPR1	3,960	1,653
RD31	2,281	5,545
RD41	1,134	4,803
RD29	276	1,981
Other varieties	3,799	1,170
National total	50,000	43,635

## Seed Production in Thailand



- The importance of good seed in crop production is generally acknowledged.
- Farmers usually keep their own seed for next season's planting. The quality of farmers' seeds is generally lower than the standard.
- In order to improve rice yield and grain quality by utilization of standard seed in rice production, a seed production and seed exchange program was implemented during 1981-1986. Instead of buying rice seed from seed agencies at high cost, farmers can bring their own seed in exchange for good seed at the same price.
- The purity of rice seed can prevent the contamination of rice seed with weed seeds



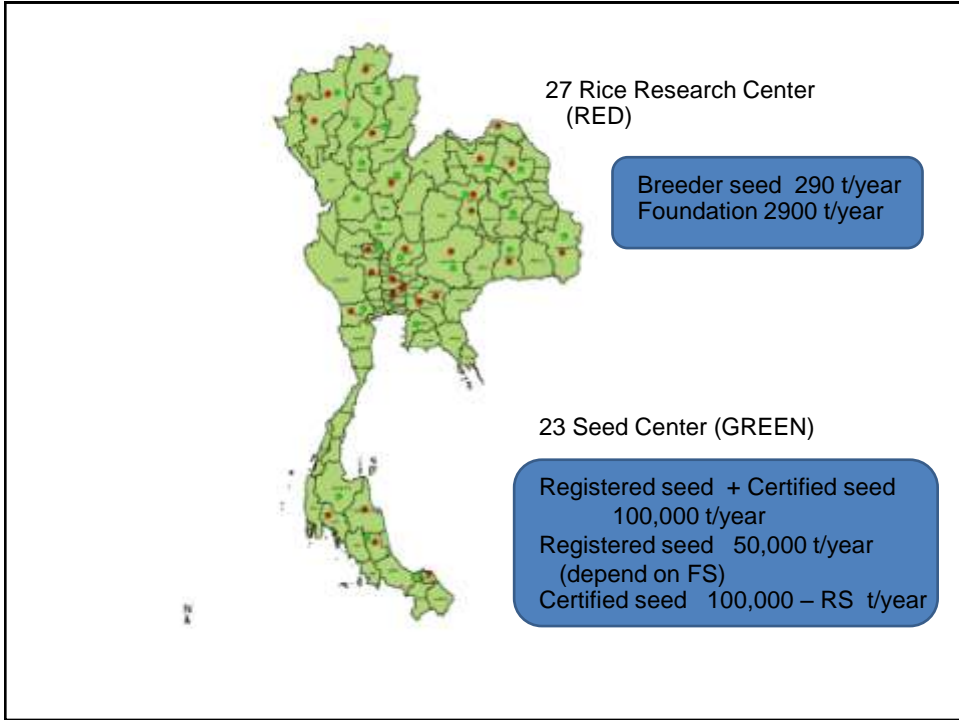
## Government Organization Chart

- Ministry of Agriculture and Cooperative/ Rice Department / Bureau of Rice Research and Development are involved in the processes from seed multiplication to distribution.

Name of government department and division	Roles in the seed multiplication and distribution
Bureau of Rice Research and Development (Rice Department)	Varietal improvement Breeder Seed Foundation Seed
Bureau of Rice Seed (Rice Department)	Registered Seed Certified Seed
- Bureau of Rice Seed (Rice Department) - Community seed center - Department Cooperatives and Promotion	Certified Seed

## Organization Chart





## Calculation

- Calculation method to set the volume of seeds of different levels

### Factor

- the order of the market in each local area
- seed stock
- production potential of seed centers
- the budget each year



Breeder seed	10% of FS (290 kg)	
Foundation seed	depend on the requirement and budget each year (2,900 t)	
Registered seed	FS x 30	100,000 t
Certified seed	RS x 30	

## Staff involved in Rice seed-related activities

- Number of government staff placed in rice-related facilities (incl. workers at cultivation farms)

Name of the facility (according to Plate 7)	Researchers	Technicians	Labor staff	Others	TOTAL
Bureau of Rice Research and Development (27 RRC)	275	11	713	-	999
Bureau of Rice Seed (23 RSC)	192	98	221	94	605

Technicians labour staff and others are research assistants, seed production, administration services and others.



## Education and training

- Educational background of staff in different levels

Name of the facility (according to Plate 7)	PhD Master	Bachelor	Poly-technic	High school	Others	TOTAL
Bureau of Rice Research and Development (27 RRC)	163	112	11	4	709	999
Bureau of Rice Seed (23 RSC)	55	217	96	220	17	605



## Education and training

- Training given to the staff after placement

Type of staff	Types of training
Researchers	Seed production, Seed multiplication, Seed processing Seed storage, Seed quality control
Technicians	Seed processing system
Labor staff	Skill in seed processing plant Skill in seed testing
Other staff	Skill in the particular job

## Role of the Private Sector

What are the roles of the private sector?

- Seed Producer
- Trader
- 1400 agent dealers
- Produce certified seed only



## Role of the Private Sector (cont.)

- Photos of typical private sectors in Thailand (seed producers, traders, input dealers etc.)



## Price of Seeds

- Please show the price of different variety of seeds.
  - Purchase price from seed producers
  - Retail price at which seeds are sold to rice farmers

Variety	Gate price at the seed producers (US\$/kg)	Retail price (US\$/kg)
KDML105, RD15	0.6	1
Other varieties	0.5	0.6

