

The background of the slide features a stylized map of Africa and Asia in shades of tan and beige. The map is positioned behind the text, with Africa on the left and Asia on the right, separated by a vertical line.

**Extension Capacity
Development for Rice Food
Security in Africa:**

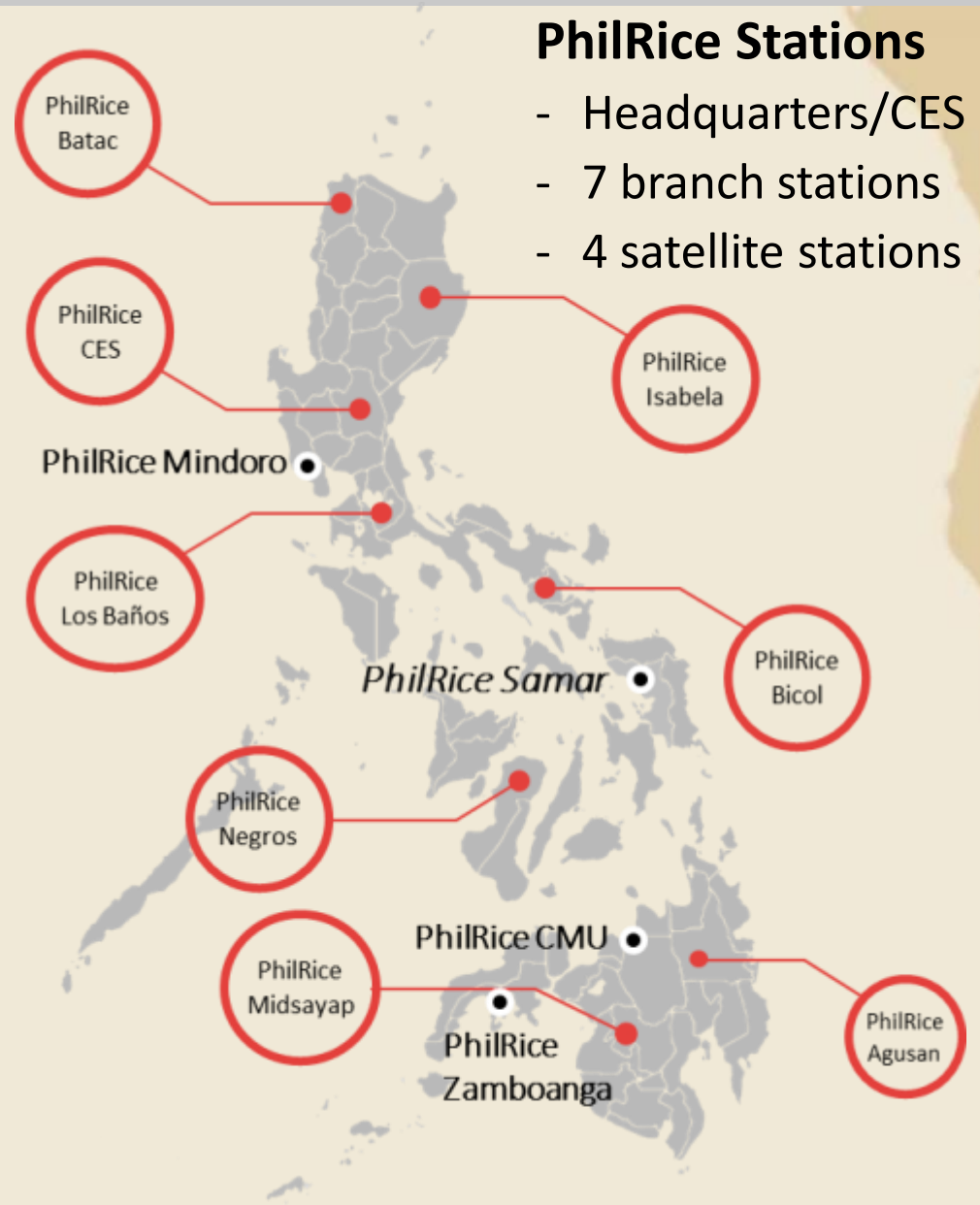
A Case of South-South Cooperation

(PhilRice-JICA-IRRI)

Background

Philippine Rice Research Institute or **PhilRice** is a government corporation under the Department of Agriculture.

PhilRice is the lead agency for Rice Research for Development (R4D) in the Philippines.



Background

- PhilRice and JICA have a long history of partnership through general grant-aid, technical cooperation projects (TCP 1 to 5), and in-country training programs (1990 to present)
- Under the South-South Cooperation Project, PhilRice has been involved in two major activities of CARD:
 - 1 Seminars via video conference
 - 2 Training of extension agronomists (Phases 1&2)

Highlights

1 Seminars through Video Conference in 2012

Topic	Date	Resource Person
Seminar 1. System of seed multiplication and distribution	Sept. 19	Susan R. Brena
Seminar 2. Efforts to improve rice quality both on-farm and down the value chain	Oct. 19	Manuel Jose C. Regalado Marissa V. Romero
Seminar 3. Water-User Association	Nov. 16	Evangeline B. Sibayan/ Kristine S. Pascual

Highlights

1. Seminars (cont.)

Observations and experiences

- Great opportunity to share and learn/gain knowledge from other resource persons
- Some participants were articulate but interaction was limited due to limited time and time delays from speakers to the audience
- Long waiting time from setting/connecting until completion of the seminar due to time differences and multiple speakers (almost midnight in the Philippines)

Highlights

1. Seminars (cont.)

Observations and experiences

- No feedback from the audience while speakers were delivering the topic
- Difficult for speakers to establish rapport and interact with passive and distant audience
- Technical problems occurred like presentation could not be seen by the audience

Highlights

1. Seminars (cont.)

Recommendations

- Face-to-face seminars will be more effective, as more interaction and participation will be enabled
- Maximum of two speakers per seminar
- Improve technology on video conferencing to shorten time delays from speaker to the audience, and limit technical problems (connection, video, audio)

Highlights

2 Training of Extension Agronomists

Phase 1 - *Season-Long Rice Farming Program for Extension Agronomists of Sub-Saharan Countries (2011-2013)*

- Start of collaboration between and among JICA, IRRI, and PhilRice

Highlights

2. Training of Extension Agronomists (cont)

- Consisted of three courses:
 - ✓ *17-week course for extension officers*
 - ✓ *3-week course for junior researchers (by IRRI)*
 - ✓ *3-week course for research technicians (by IRRI)*
- PhilRice teamed up with IRRI to conduct the 17-week course
 - ✓ *16 weeks of training conducted at PhilRice; and 1-week stay at IRRI*

Highlights

2. Training of Extension Agronomists (cont)

- The trainees learned the fundamentals of rice production (anchored on the *PalayCheck* System), rice-based farming systems, and basic extension methods



Highlights

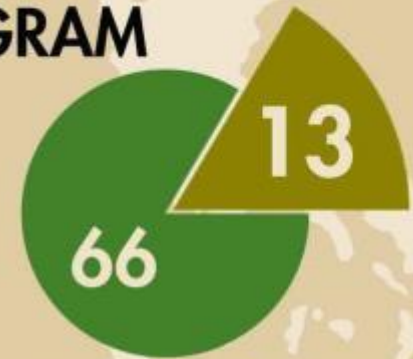
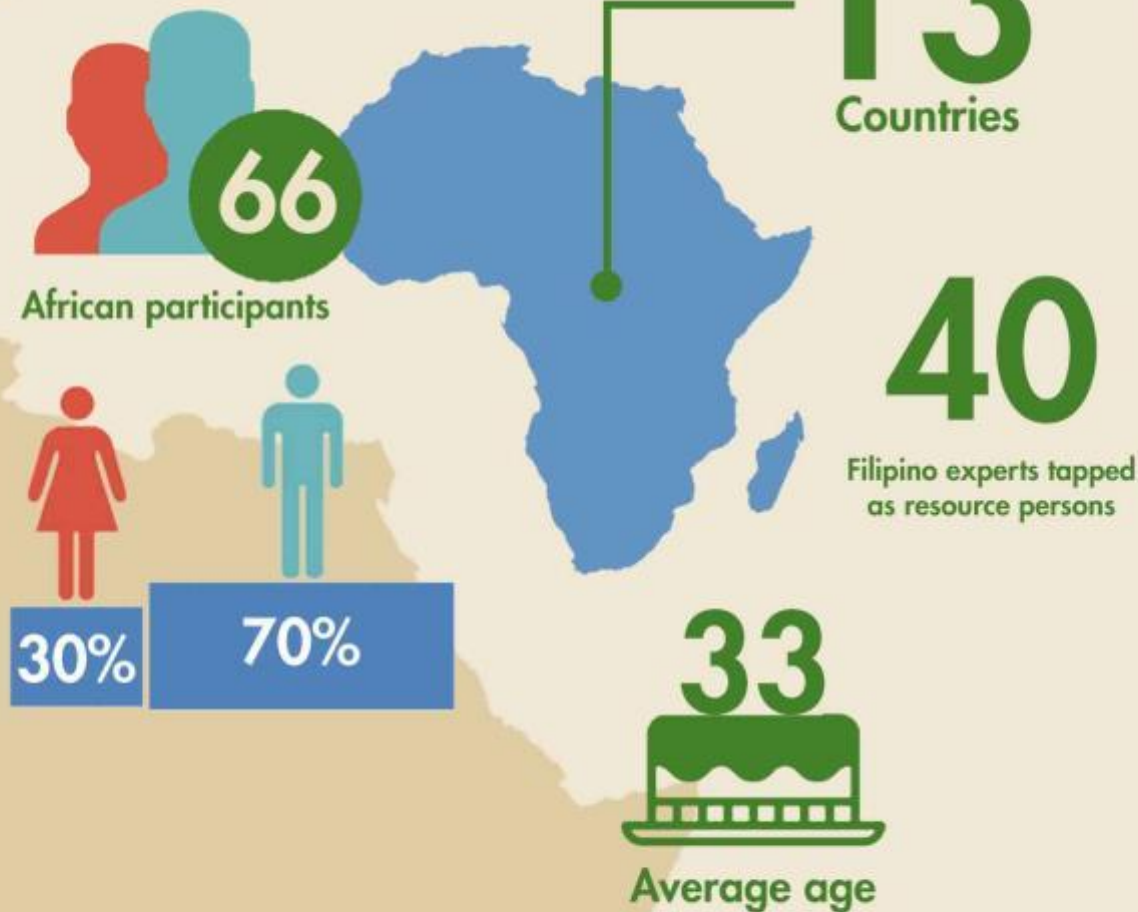
2. Training of Extension Agronomists (cont)

- Learning strategies included:
 - ✓ Lectures and Discussions
 - ✓ Hands-on Field Activities
 - ✓ Participatory Demonstration Trials
 - ✓ Farmers' Field Schools



PHASE 1: SEASON-LONG RICE FARMING PROGRAM FOR EXTENSION AGRONOMISTS OF SUB SAHARAN COUNTRIES

(16 WEEKS) 2011-2013



13 of 79

training participants were Filipinos.



Highlights

2. Training of Extension Agronomists (cont)

Phase 2 – Rice Seed Production and Extension Methods (2016-2018)

- Focused on improving the rice seed sector of CARD member-countries
- Consisted of 3 courses
 - ✓ *3-week course on quality breeder seed production*
 - ✓ *8-week course on rice seed production*
 - ✓ *2-day in-country training on quality seed production*

Highlights

2. Training of Extension Agronomists (cont)

- The trainees learned the basics of rice production (anchored on the *PalayCheck* System) with focus on quality rice seed production



Highlights

2. Training of Extension Agronomists (cont)

- Learning strategies included:
 - Lectures and Discussions
 - Hands-on Field Activities
 - Laboratory Exercises
 - Farmers' Field Visits & Evaluation



PHASE 2: RICE SEED PRODUCTION AND EXTENSION METHODS

(8 WEEKS) 2016-2018



African participants

23

Countries
including Afghanistan

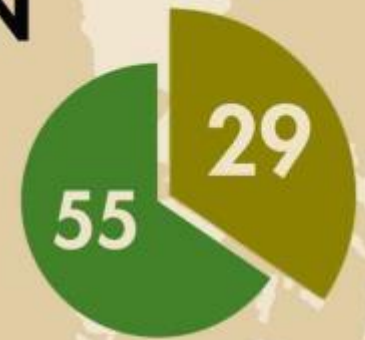
25

Filipino experts tapped
as resource persons

35



Average age



29 of 84

training participants
were Filipinos.



38%

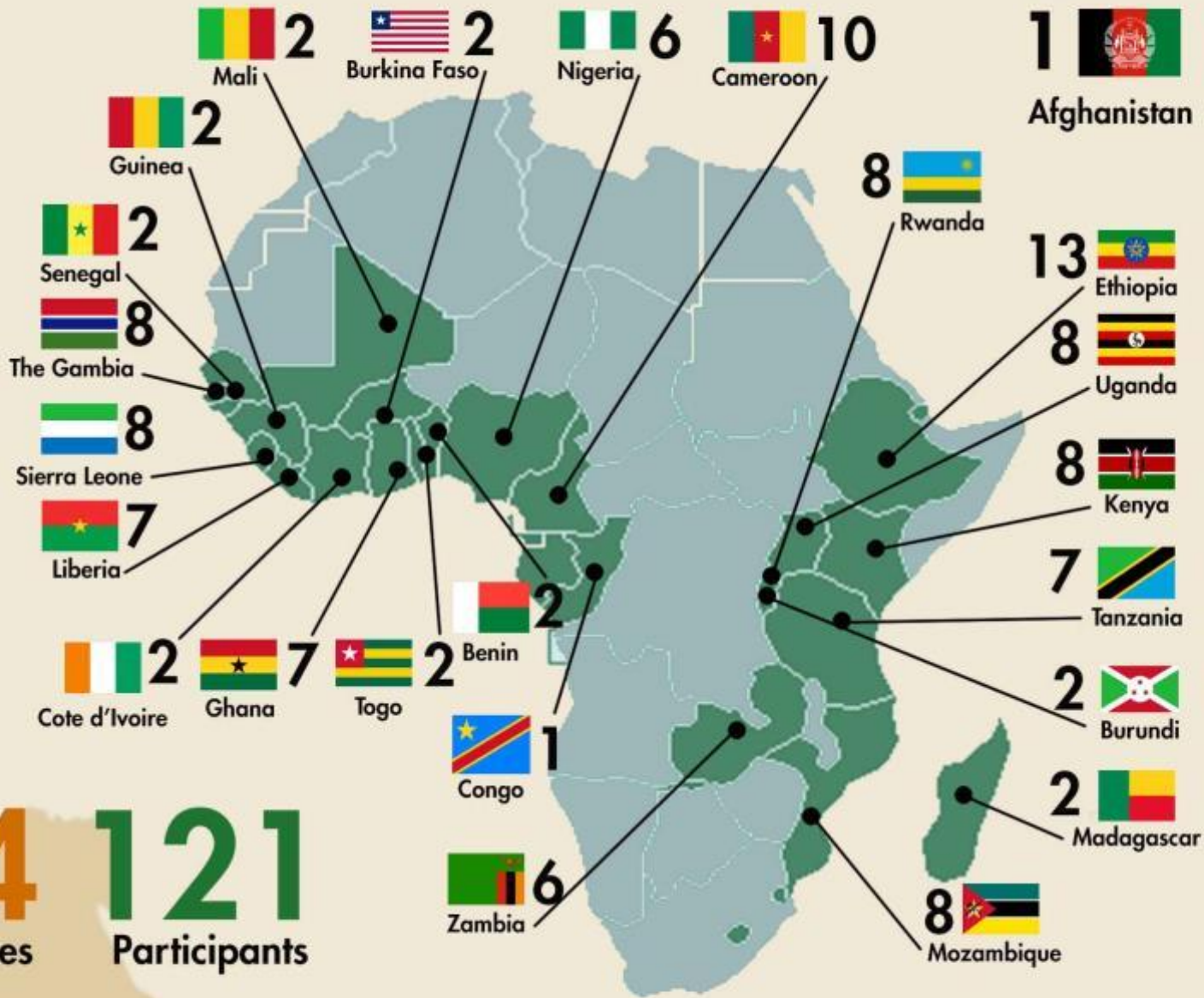


62%

31



Average age



24 Countries
121 Participants

SUMMARY MAP

Immediate Feedback/Impact (Phase 1)

- **Conduct of demonstration and FFS by the season-long training graduates**
 - Land preparation
 - Development of bunds
 - Transplanting & Proper plant spacing
 - Crop monitoring
 - Fertilizer management
 - Timely weed control
 - Quality seed production

- **Significant yield increase**

Immediate Feedback/Impact (Phase 1)



Tanzania



- Line transplanting has spread to almost 80% of small farmers at Dakawa small-scale irrigation scheme of 2000ha
- Average paddy yield of 4.5 t/ha

Immediate Feedback/Impact (Phase 1)

Liberia



Uganda



Immediate Feedback/Impact (Phase 1)

- Positive support from their respective agricultural ministries
- Training of co-extension workers
- 2 SLTP graduates received commendation as Outstanding Extension Workers



Christine Kyomugisha, Uganda



Felix Oteng, Ghana

Immediate Feedback/Impact (Phase 2)

- Trainees found the course (rice seed production & extension methods) very timely and appropriate
- A trainee from Uganda started organizing farmers to do seed production
- A Phase I graduate from Cameroon served as a co-facilitator cum translator in the 3rd batch of RSPE from Francophone countries

Conclusions

1. Seminars & training activities implemented as planned
2. Based on feedback, the trainings will help increase rice production in Africa (CARD's objective)
3. Great opportunity for PhilRice/Philippines to help JICA in return
4. Expanded our rice network in Africa

Challenges

1. Sustainability of support extended to the trained extensionists from their agriculture ministries (budget, work assignment, logistics)
2. Provision of technology updates and technical support for technology promotion delivery
3. Trained agronomists-extensionists' commitment/work assignment remain
4. Continue to document and share best practices among trainees, and to other project implementers in Africa

Future

*Expanding rice production in Africa =
food (rice) security in Africa, the
future rice supplier of other countries*

Quality Rice. Quality Life.



PhilRice Text Center
0917-111-7423



rice.matters



PhilRiceTV



rice_matters



www.philrice.gov.ph
www.pinoyrice.com



prri.mail@philrice.gov.ph

