

IsDB Regional Rice Value Chain Program: A Collaborative Framework for Food Systems Transformation, a multi-stakeholder pathway for sustainable food systems



Momodou L. Ceesay –Lead Rural Development Specialist/ESID

Engaging Member countries on the path of food sovereignty



Momodu L. Ceesay-Global Lead Rural development

September 2022

Islamic Development Bank, Jeddah KSAR

Context

IsDB Efforts in fighting food insecurity and activating civil society

A systemic, dynamic and pragmatist approach to understand transition mechanisms

Transforming agriculture for sustainable development, a key to unlock how public finance can help mobilize more and better
Involve all stakeholders

Challenges

- ❖ A systemic, dynamic and pragmatist approach to understand beneficiaries transition mechanisms.
- ❖ The Bank's vision for the agriculture and rural development sector assuming a leading catalytic role, within the next decade, in supporting the technological, institutional and policy changes that would trigger a lasting transformation of the MC economies

The IsDB Regional Rice Value Chain Program: A powerful pathway towards alleviating poverty



Truly innovative approach in Agriculture project:

- Regional program involving 10 countries
- Value chain based



Vital initiative for beneficiary member countries:

- Food security/Food Sovereignty
- Governmental trade balance & Budget



Strategic Flagship program for all:

- IsDB
- LLF



Significant investment of US\$300 million:

- LLF Financing (IsDB + LLF Grants)
- Several Co-financers



Powerful mobilization dynamic & engine:

- Partnerships
- Synergies

Rice production in Africa suffers from weak fundamentals



Rice production is ineffective:

- low yield, poor quality of paddy and high cost of production
- Average yield of rice farm between 1 and 1.5 metric tons/h
- No meaningful investment to support low productivity



Rice productivity is poor:

- Land productivity is less than 55% of world average yields
- Labor productivity is less than 60% Vs Asia and Latin America
- % of agricultural exports fell from 15% (mid-1960s) to less than 4% today



Ability to appeal to African consumers is compromised:

- Poor quality of paddy leads to poor rice grains mixed with impurities and stones
- Rice presents non uniform grain size and color
- Local rice is generally unattractive to local consumers
- Consumers preferred foreign rice to local rice varieties



Why the IsDB regional initiative?

- Regional Investment Plan for accelerating Rice Self-Sufficiency in IsDB member countries/ SSA using the Value Chain Approach
- Lack of a well-coordinated regional effort to deliver Rice production technologies across similar agro ecological zones & help address related issues of extension, policy, market, R&D, & regulation, hindering widespread use of technologies
- IsDB & its identified partners, therefore, seek to refocus the efforts of CGIAR & its network with NARES to build sustainable rice investment program.

The Value chain approach will emphasis on:

1- Accelerate and sustain self-sufficiency in rice in the 10 Countries.

2- Contribute to food sovereignty in the 10 Countries.

3- Identify priority segments of the Regional Value Chain for investment

4- Identify additional investment along the rice value chain

5- Enhance involvement of Private Sector, job creation and Regional market share in global rice trade

Gambia, Guinea, Niger, Senegal & Sierra Leone: Regional Rice Value Chain Development Project

Closing the Rice self-sufficiency gap in the 5 countries through an integrated Value Chain approach

Key Issues

- Weak & inefficient Rice production system unable to cover Rice demand
- All 5 countries spend huge amounts to import needed quantity of rice

Components

- **Raising Rice productivity and productivity (focus on "Push factors" of the value chain):**
 - Bring technologies & innovation
 - Raise current low rice yields
 - Improve agriculture infrastructure
- **Strengthening the links to markets (focus on the "Pull factors"):**
 - Link smallholder farmers to functional & remunerative markets
 - Improve market infrastructure, storage & processing facilities
 - Support private-sector led contract farming
 - Support produce buyers & off-takers including millers
- **Fostering enabling policy & institutional environment (focus on "Policy factors" with great emphasis on building strong public-private partnerships.**
- **Project implementation & coordination support**

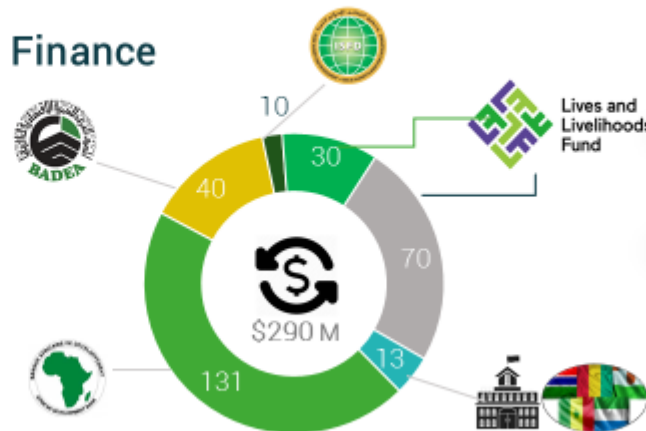
Outputs/Outcomes/Impact

- **Key Outputs:**
 - 47,265 ha land developed
 - 200,000 tons of quality seeds
 - 14 milling facilities constructed
 - 300 km of rural road
 - 76 rice storage facilities
 - 1.2 million beneficiaries
- **Outcomes:**
 - Yield increase from 1.5 to 6 mt/ha
 - 150,000 jobs (45% women/youth)
 - 9 SMEs created
- **Impact:**
 - Rice self-sufficiency gaps closed by 10-20% per country (confirmation after appraisal)
 - Average farmers' income per hectare improved by 100%
 - Pop below poverty reduced by 30% (at project sites)

Implementation Timeline

- 5 years after effectiveness

Finance



Relevance

Rice self-sufficiency is in the heart of each country national food security strategy

Decisive socio-economic transformation in each country through Rice project

Strong contribution to achieving SDGs 1,2,8,13 & 17



Readiness

Diverse rice initiatives already launched in 5 countries

Initial assessment of Rice value chain in 5 countries

Value chain actors mobilized

Very successful country consultative workshops



Results

1.2 million beneficiaries decisively impacted through the project

Strong transformation as outcomes (research capacity, rice transformation & value chain financing, rice trading marketing & distribution)

Self-sufficiency in rice increased & public rice import spending reduced

About 150,000 new jobs created (involving women & youth)

Farmers income boosted by 100%



Qrag Review

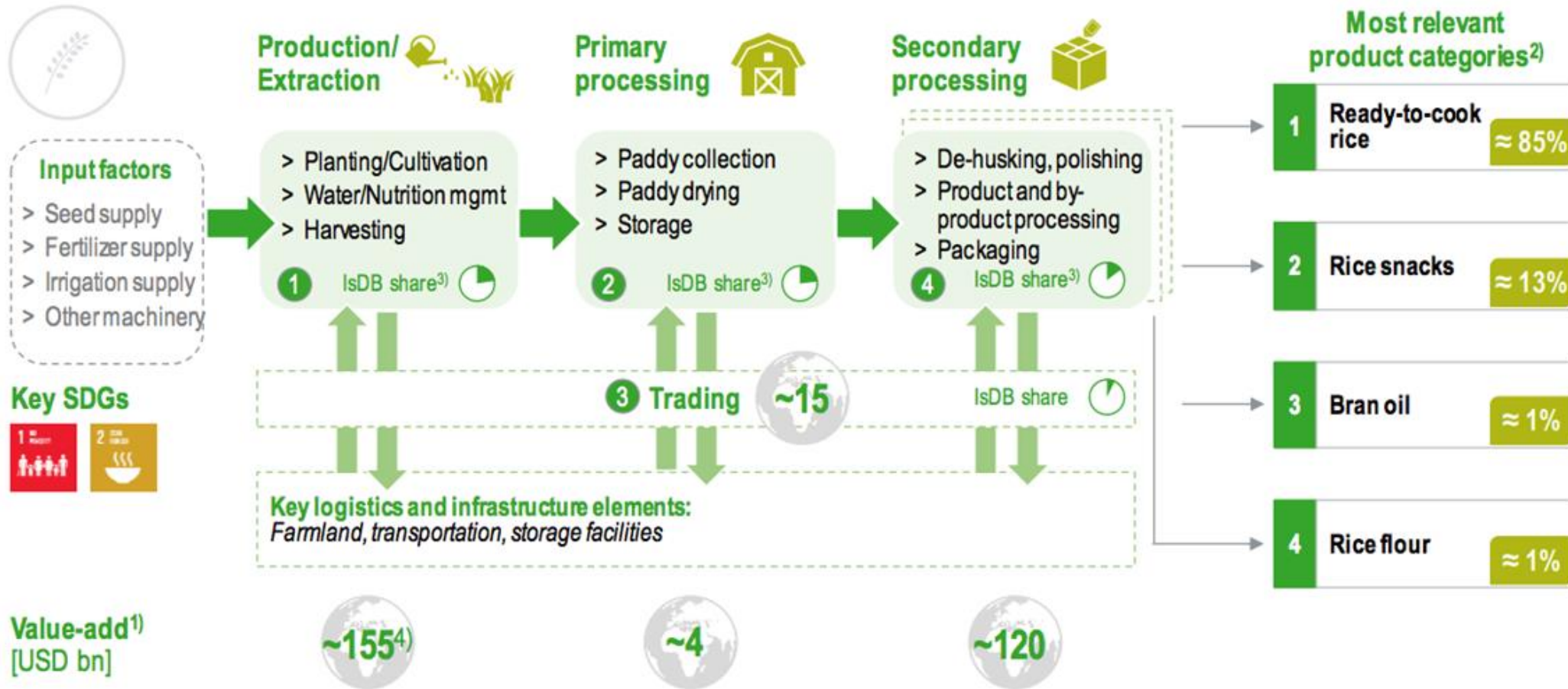
Response to Qrag recommendations that have been addressed.

The Value chain approach needs to be efficiently leveraged to unlock the massive productive potential of SSA



Use	Use a value chain approach, includes farm-to-market linkages, access to resources to enable upgrading & ability of the poor to capture benefits
Use	Use a push-pull approach (pathways out of poverty + value chain development) to ensure inclusion of the farmers including youth and women
Take	Take a systems approach that recognizes the inter-connections among farming, market and ecological systems and avoids singular commodity or simplistic technical fixes
Address	Address systemic constraints that could improve multiple value chains
Don't ignore	Don't ignore the better-off farmers - key to the security of vulnerable farmers
Include	Include regional markets - they are critical even to the most vulnerable
Ensure	Ensure Government does not crowd out private sector upon which cash and employment generation depend
Use	Use facilitation approaches to change behavior and ensure sustainability
Build	Build flexibility into project design that allows for learning and adapting,
Build in	Build in credible evaluations to ensure evidence-based learning

Rice Value Chain



1) Estimate for 2018; 2) As measured by retail value 2018; 3) In global comparison; 4) Value-add for production step does not consider input factor costs

1

HOW TO GET THERE? Using key partners to !!!

- Understand the policy
- Identify institutional and public/private investment drivers of successful rice value chain development in Asian countries
- Explore opportunities for leverage in Africa and Focus on interventions towards rice sovereignty

2

One of the keys is the Orchestration of the VC ...Will support IsDB to implement a sustainable structuration of local value chains and for the creation of social and economic value for all stakeholders

3

IsDB will support the full-scale utilization of digital technologies to empower smallholder farmers, providing both the agility and the security required to accelerate local food production by connecting all small-or-large-scale producers and other value chain stakeholders to investors, and financial institutions to achieve food sovereignty.



Regional Rice Value Chain Development Project (RRVCDP) –The GAMBIA

Key Project Achievements to Date



Development of pump irrigation scheme
2,685Ha



Development of tidal irrigation scheme 180Ha



Acquisition of equipments in the project sites

Construction of drying floors in the project sites



Site identification visit in Sukuta



Rehabilitation of one seed warehouse in Sapu

Establishment and rehabilitation of irrigation facilities in two (2) schemes (30Ha)



Work in progress at NSS Seed stores



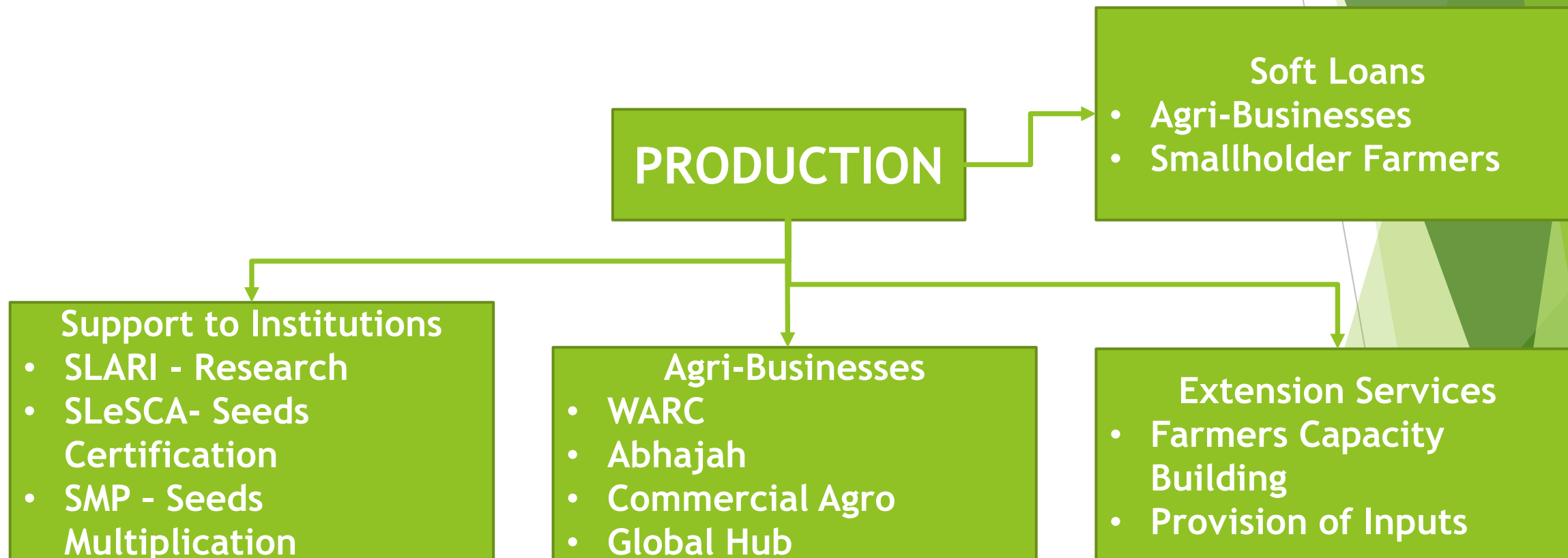
- Rehabilitation of 200m canal segment that connect canal one and two.
- New area= new establishment= 15ha
- Canal 1= 609m constructed by the chines
- Canal 2=476m in good condition
- End of canal 1
- Exist tidal/pump area= 9h for Rehabilitation
- Main earth canal = 922m



No	Description	Status
1	Construction of Market Infrastructure	20% work progress
2	Rehabilitation of 2Nos. Storage Facilities at Torma-Bum	Contract Signed and awaits occupants to quit for full possession by Contractor
3	Construction of 1No. New warehouse with drying floor at Torma-Bum	Contract signed, awaiting the demolition process to complete
4	Procurement of 4Nos. 15TPD milling plants	Production in progress
5	Procurement of 4Nos. 100KVA Diesel Generators	Production in progress
6	Construction of 4Nos. Prefabricated Mill Housing Structures	Contract signed
7	Development of 4000Ha of Irrigation Infrastructure	Data collection completed and report to be submitted for review.
8	Rehabilitation of 35Km of Feeder Roads	Road Condition Survey Completed and PMU awaits submission of Report.



FARM PRODUCTION

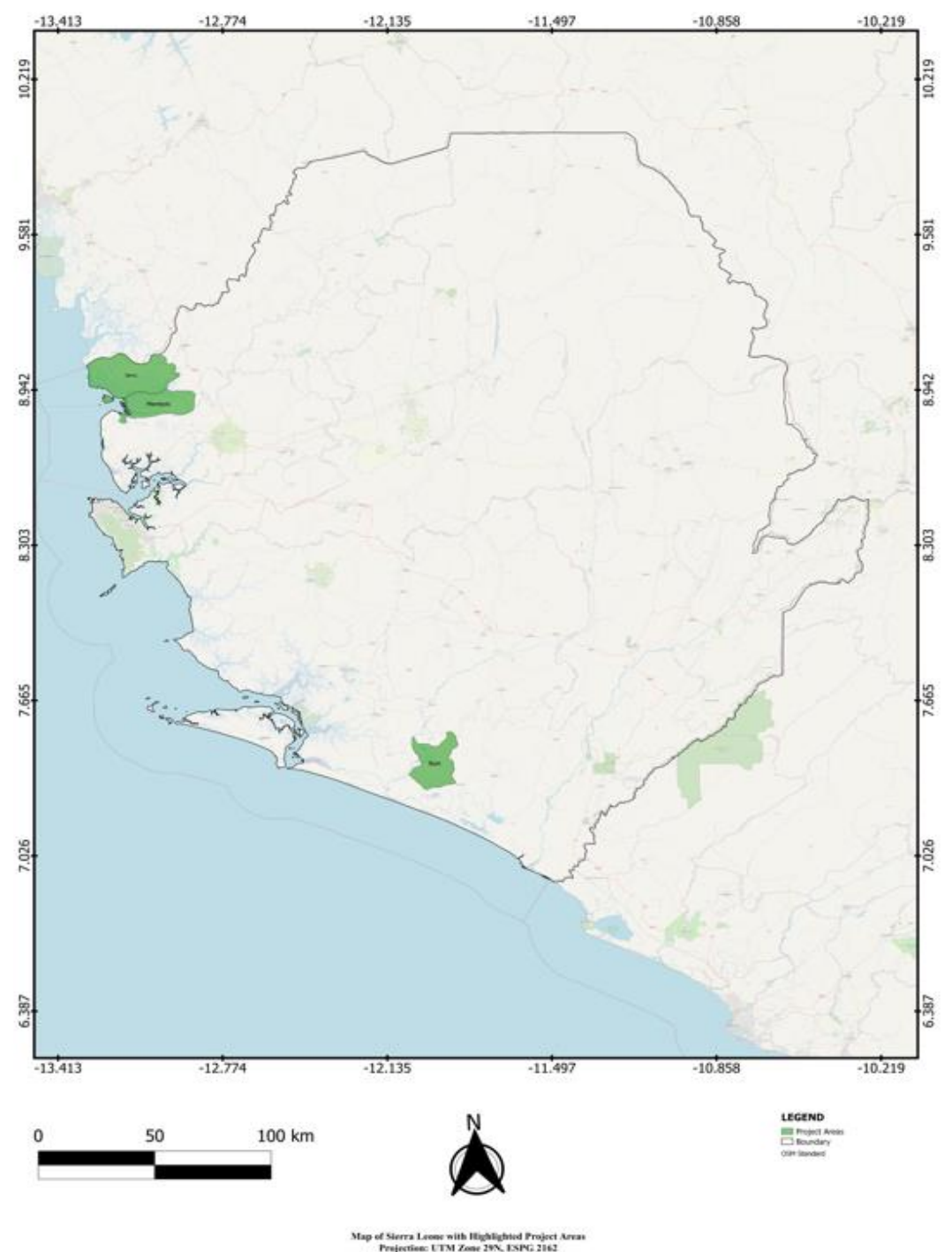


REGIONAL RICE VALUE CHAIN PROJECT (RRVCP) SIERRA LEONE

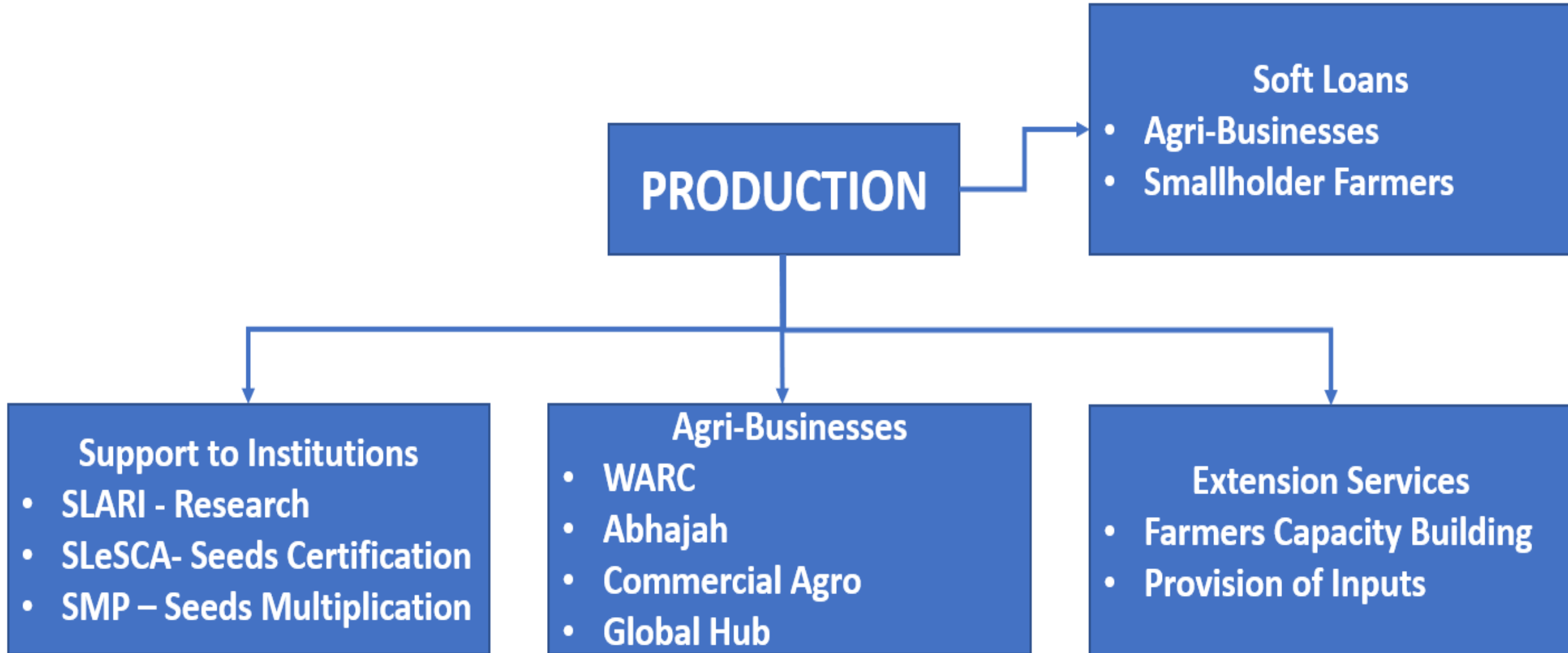


Operational Areas:

1. Torma-Bum, Bum Chiefdom,
Bonthe District
2. Samu Chiefdom, Kambia District
3. Mambolo Chiefdom, Kambia
District



FARM PRODUCTION



FARM SUPPORT INFRASTRUCTURES

No	Description	Status
1	Construction of Market Infrastructure	20% work progress
2	Rehabilitation of 2Nos. Storage Facilities at Torma-Bum	Contract Signed and awaits occupants to quit for full possession by Contractor
3	Construction of 1No. New warehouse with drying floor at Torma-Bum	Contract signed, awaiting the demolition process to complete
4	Procurement of 4Nos. 15TPD milling plants	Production in progress
5	Procurement of 4Nos. 100KVA Diesel Generators	Production in progress
6	Construction of 4Nos. Prefabricated Mill Housing Structures	Contract signed
7	Development of 4000Ha of Irrigation Infrastructure	Data collection completed and report to be submitted for review.
8	Rehabilitation of 35Km of Feeder Roads	Road Condition Survey Completed and PMU awaits submission of Report.

ISDB A MEMBER OF THE ECOWAS Rice Observatory



ECOWAS Commission
Department of Agriculture, Environment and Natural Resources
Directorate of Agriculture and Rural Development



Regional Validation Workshop for the ECOWAS Rice Action Plan (2020 – 2025)



ECOWAS Commission
Department of Agriculture, Environment and Natural Resources
Directorate of Agriculture and Rural Development



REGIONAL RICE OFFENSIVE

IsDB
البنك الإسلامي للتنمية
Islamic Development Bank

Thank you!



IsDB



مجموعة البنك الإسلامي للتنمية
Islamic Development Bank Group