

Mozambique

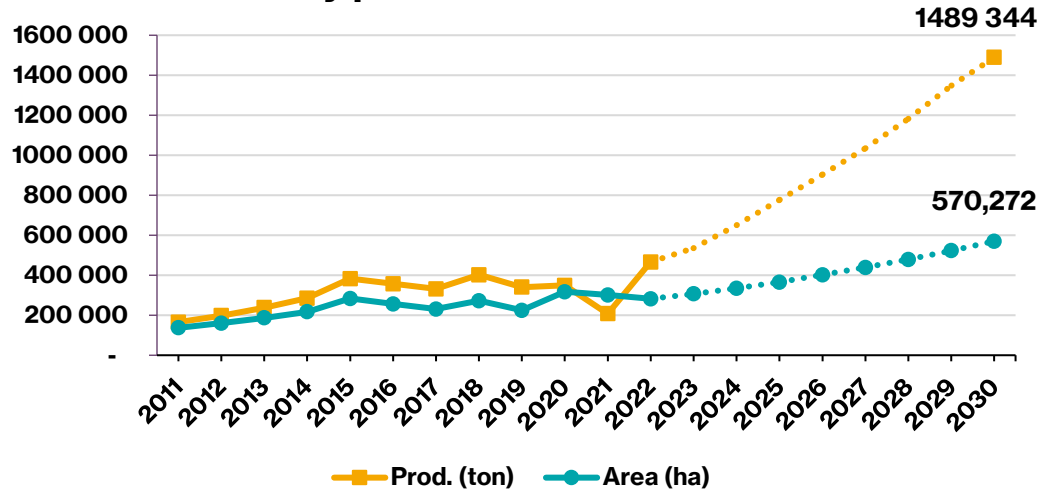
GM9 country presentation



Overall indicators

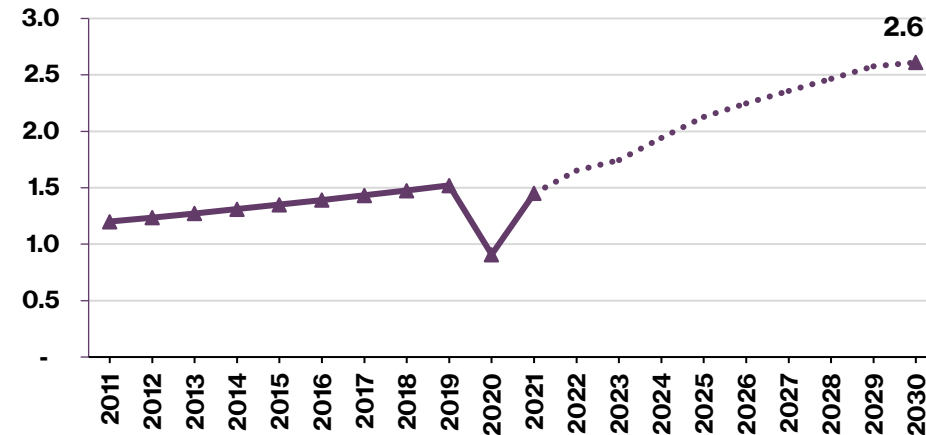
- It is estimated that Mozambique has around 900,000 ha of arable land for rice cultivation.
- Rice is largely (97.7%) grown by small-scale subsistence farmers in a rainfed condition;

Paddy production and area harvested

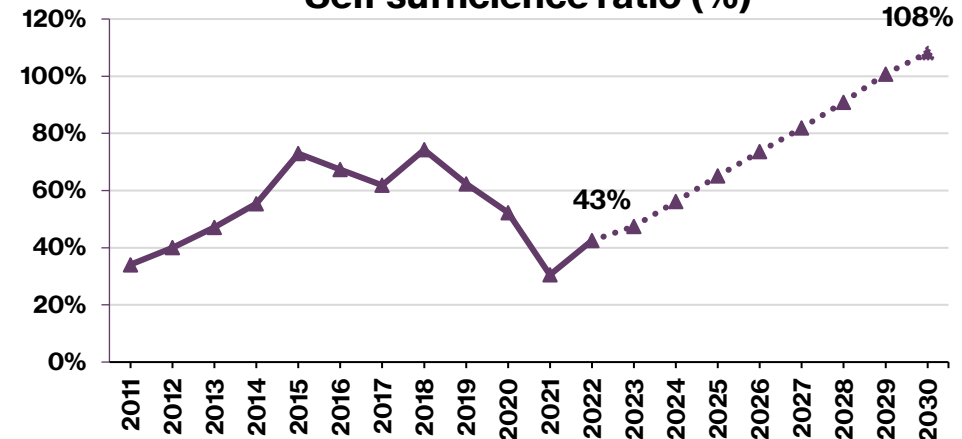


	2007	2018	2030
Production (tons)	206,385	402,000	1,489,344
Area (ha)	185,747	272,386	570,272

Yeild (t/ha)



Self sufficiency ratio (%)



Identified priority areas and Concept Notes

Seeds

Promotion and seed use of certified seed;
Development and adoption of water stress and flood tolerant varieties;

Irrigation

Promotion of irrigation construction and maintenance

Mechanization

Equipment for land preparation;
Harvesting equipment – Combine harvester machines and threshers.

Post-harvest

Small and medium units of rice processing;
Promotion of packaging and branding.

New projects after Phase 2 started

1. Project title: Smallholder irrigation and market access project (IRRIGA)

Objective	To improve smallholder agriculture productivity and market access
Period	Jan, 2018 – Dec, 2024
Target area	Zambezia Province
Regime	Technical assistance
DP	World Bank
Budget	USD 57 millions

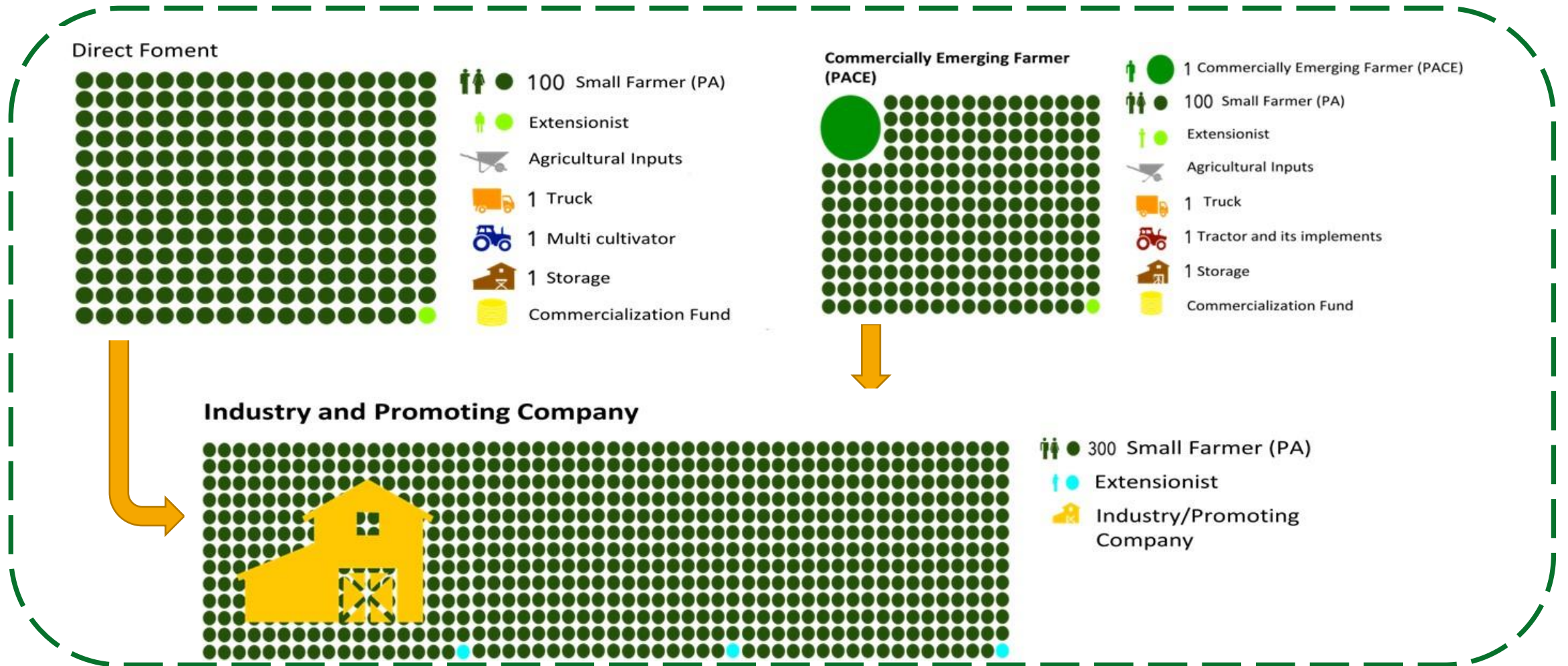
2. Project title: Programa SUSTENTA 2020-2024

Objective	Increase the agricultural income of 300,000 small-scale farmers, from USD 70 to 515; lifting 1,500,000 Mozambicans out of the poverty of food consumption by 2024.
Period	2020-2024
Target area	Mozambique
Regime	Technical assistance, inputs, machinery and infra-structures
DP	Government of Mozambique and World Bank
Budget	USD 3.94 millions (For rice production, Season 2022/23)

Development through private sector involvement

SUSTENTA PROGRAM, STRATEGY

Ensure (i) technology transfer, (ii) production financing, and (iii) link to markets, within a logic of fostering productive value chains that allow small farmers to improve their family income.



Development through private sector involvement

1. *Wanbao Africa Agriculture Development, Ltd*

Total of 20,000ha under contract

Who are they

- 1) *Partnership between the Chinese company Wanbao and the governor of Mozambique (Limpopo Downstream Irrigation Scheme Company);*
- 2) Established in 2006 in Xai-Xai (Gaza Province), now expanding into the Chokwe district which has a potential of 15,000ha
- 3) Specialized in the production and commercialization of rice

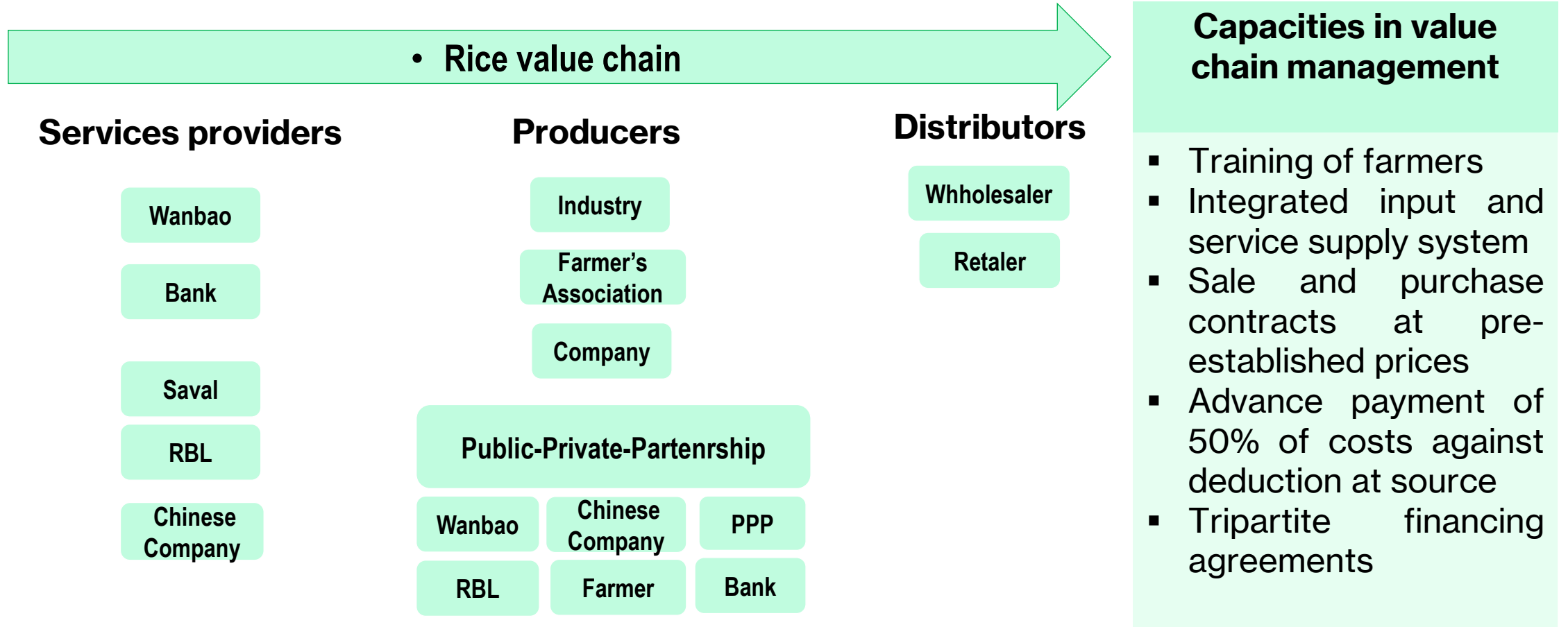
What are they doing

- 1) Establishing sustainable and long-term producer links to the market.
- 2) Contract with 421 farmers, providing high-quality seeds and other inputs
- 3) Buy rice from contracted farmers at a predetermined price and mill in their own facilities
- 4) Sell milled rice in its own brand and packaging of 5kg, 10kg, and 50kg in local supermarkets including Maputo

Impacts

- 1) The average rice yield of contract farmers increased from 3.5 to 6.0 t/ha during the same period.
- 2) Increased farmers' gross revenue from USD 766 to 1,313 per hectare

KEY SUCCESS FACTORS (Capacities in value chain management)



KEY SUCCESS FACTORS - Technical Competence



Soil leveling



Soil paddling



Certified seed (var. Simao)



Pre-germination of seed



Sowing on flooded soil



Irrigation in the first 40 days, small-scale farmer



Timely harvesting and drying



Thank you for your attention

Obrigado pela atenção

Merci pour votre attention

شكراً لكم على اهتمامكم

Asante kwa umakini wako