



# Update 2023

# WORLD FOOD PROGRAMME



World Food  
Programme

SAVING  
LIVES  
CHANGING  
LIVES

IN 2022



**159.9 M**

beneficiaries reached

**^ 25%**

2021: 128 M



**4.8 MT**

food distributed



**107.9 M**

beneficiaries



**\$ 3.3 B**

cashed-based transfers and  
commodity voucher distributed

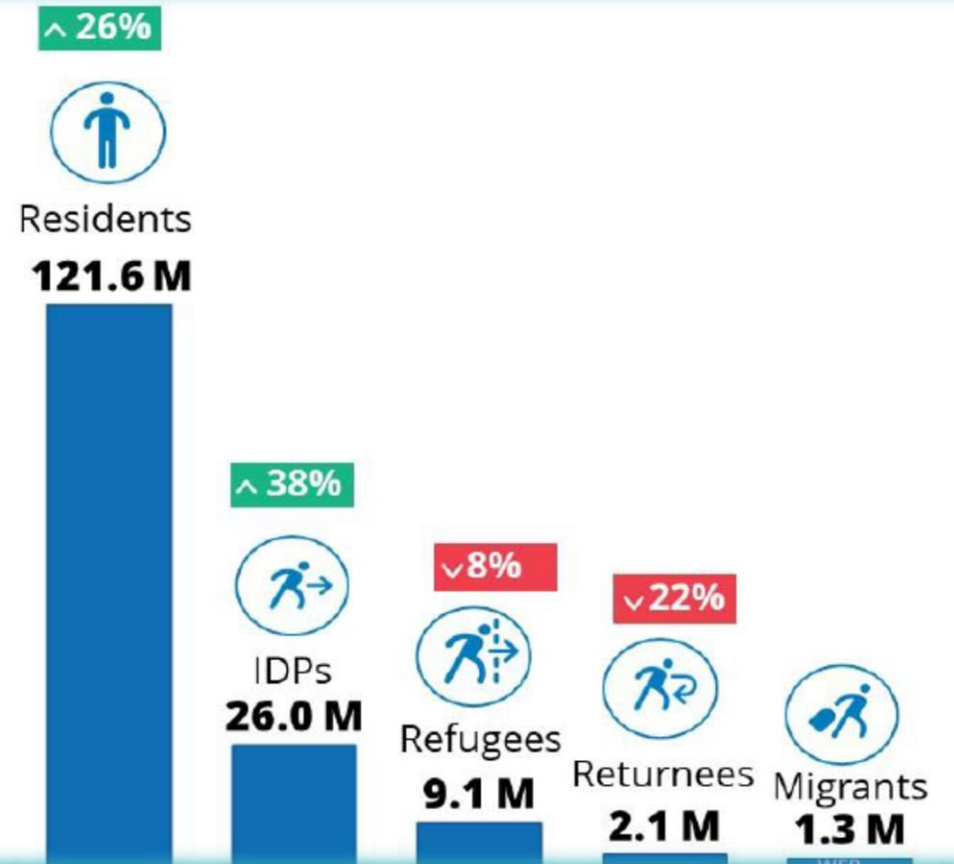
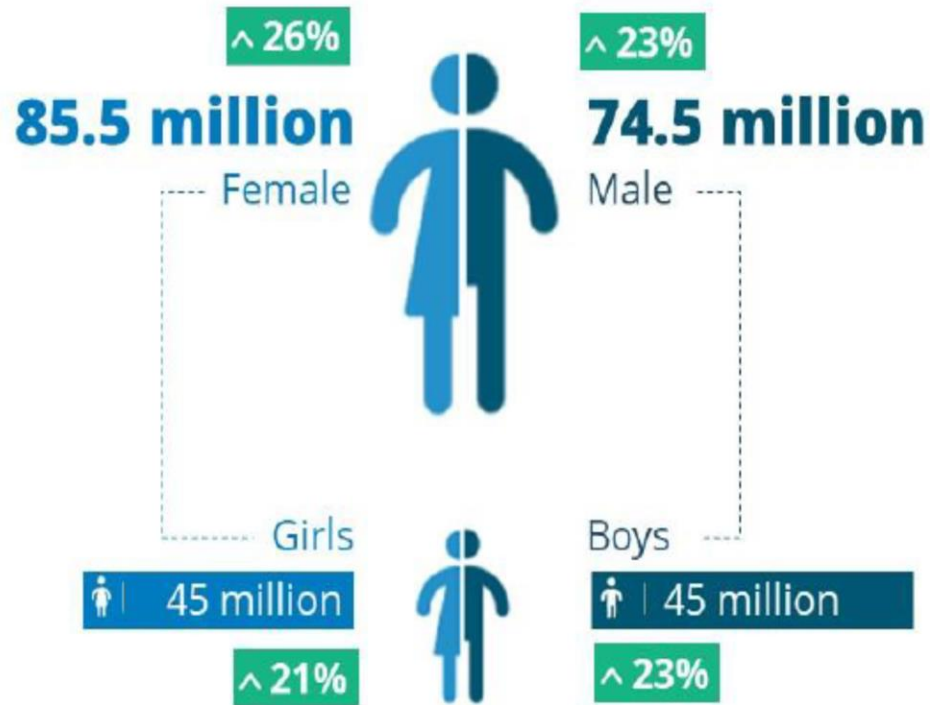


**56 M**

beneficiaries

# 2022 Beneficiary by age, sex, residence status

 **159.9 M**



# A GLOBAL FOOD CRISIS

The world is facing a food crisis  
of unprecedented proportions.

**828 million**  
people going hungry

**349 million**  
people facing acute food insecurity in 79  
countries

**49 million**  
people face famine in 49 countries



# SAVING LIVES, CHANGING LIVES

# SAVING LIVES

When disaster strikes, WFP is on the front line, providing food and other assistance to those most in need.

## WORKSTREAMS

- Disaster risk reduction
- Emergency relief
- Food assistance
- Humanitarian support and services
- Supply chain



# CHANGING LIVES

WFP works to build long-term resilience, helping communities recover from disasters and removing the roadblocks on their path to a safer, more prosperous future

## **WORKSTREAMS**

- Asset creation
- Cash and market support
- Climate action
- Food systems
- Gender equality
- Nutrition
- Resilience building
- School-based programmes
- Smallholder farmers support
- Sustainable livelihoods and ecosystems



# SMALLHOLDER FARMER SUPPORT

In 2021

**947,000**

smallholder farmers supported

**6,000**

aggregation systems supported (*6 times -2016*)

**826,000 +**

storage facilities provided

**50+**

**countries** with smallholder supported

**2.1 million**

**mt food** purchased locally/regionally - *127,000mt 2016*







## **WFP's support to smallholder rice farmers**

### **The case of Gambia**

Through various initiatives, WFP aims to:

1. improve the livelihoods of farmers;
2. reduce post-harvest losses;
3. enhance market access, and
4. promote the production and consumption of fortified rice.

## **Support to Smallholder Rice Growers through Peace Building Funds:**

### 1. Cash for Work Activity:

- WFP supported 400 smallholder rice growers, with 40% of them being women.
- The support aimed to prevent pre-harvest losses caused by floods in the rice fields due to torrential rains.
- A total of 29 metric tons of rice were harvested in the Central River Region, saving the produce from rotting and ensuring the farmers' income.



### 2. Infrastructure Support:

- WFP constructed nine concrete drying floors to facilitate rice drying.
- Tarpaulins provided to 6,574 women farmers in nine communities.
- reduced post-harvest losses, improved grain quality, and enhanced market access and profitability for smallholder rice farmers.



## **Local Procurement of Rice by WFP:**

WFP procured rice from Maruo Farms Ltd, a local rice aggregator working with smallholder farmers, with 90% of them being women. A total of 1,547.64 metric tons of Rice - Broken 100% from 2021 to 2023, with a corresponding value of \$1,036,310.69 have been procured.

- Commodity: Rice - Broken 100%
- 2021: \$131,402.58 for 211.55 metric tons
- 2022: \$508,382.95 for 796.09 metric tons
- 2023: \$396,525.16 for 540 metric tons
- Total: \$1,036,310.69 for 1,547.64 metric tons



## **WFP Support to Maruo Farms for Production of Fortified Rice:**

1. Equipment Procurement and Installation:
2. Quality Assurance and Control
3. Fortified Rice Acceptability Test
4. Mass Production of Fortified Rice
5. Social and Behavior Change Communication (SBCC)



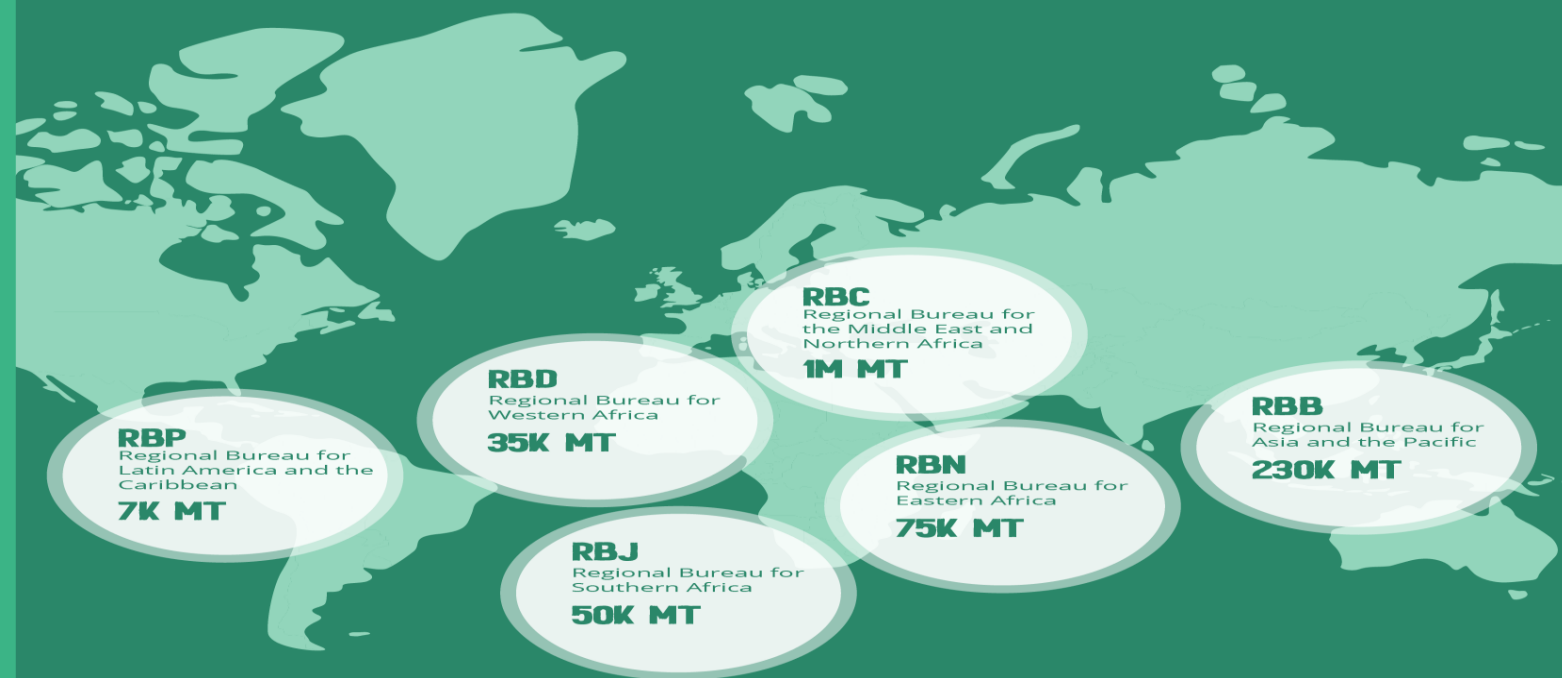
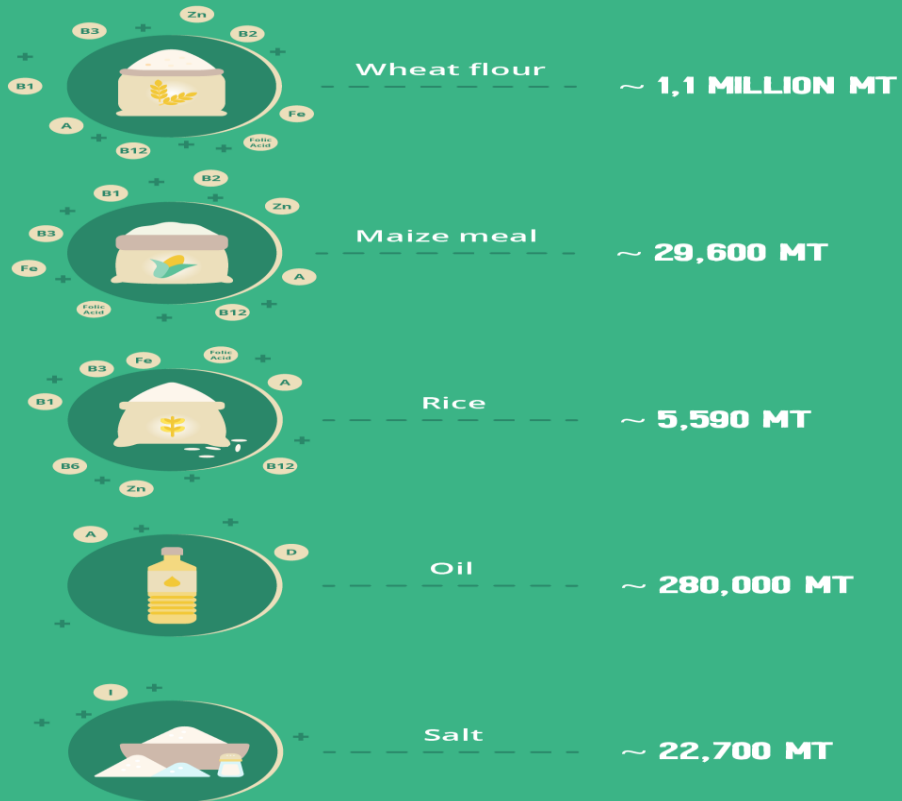
# Fortified staple foods distributed in 2021 – 1.5 million MT increased to nearly 2 million MT in 2022

## WFP'S 2021 FOOD FORTIFICATION OVERVIEW

WFP sources and provides fortified staple foods, such as cereals, oils and salt, for our programmes and food distributions across the world.

The total quantity of fortified staple foods distributed by WFP in 2021 is ~ **1,5 MILLION MT**

### Quantities of fortified staples foods handed over to cooperating partners in 2021













**THANK  
YOU**

