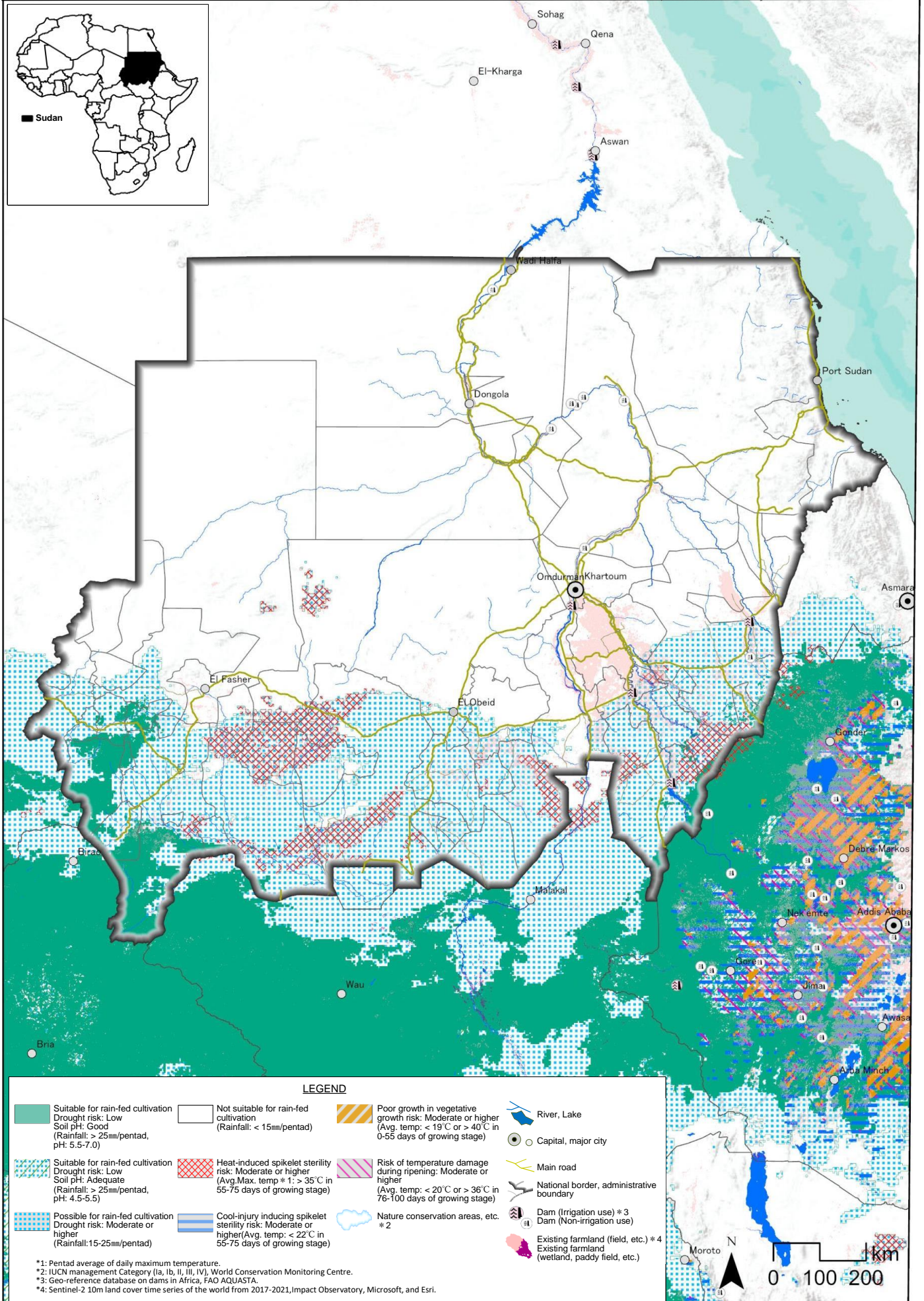


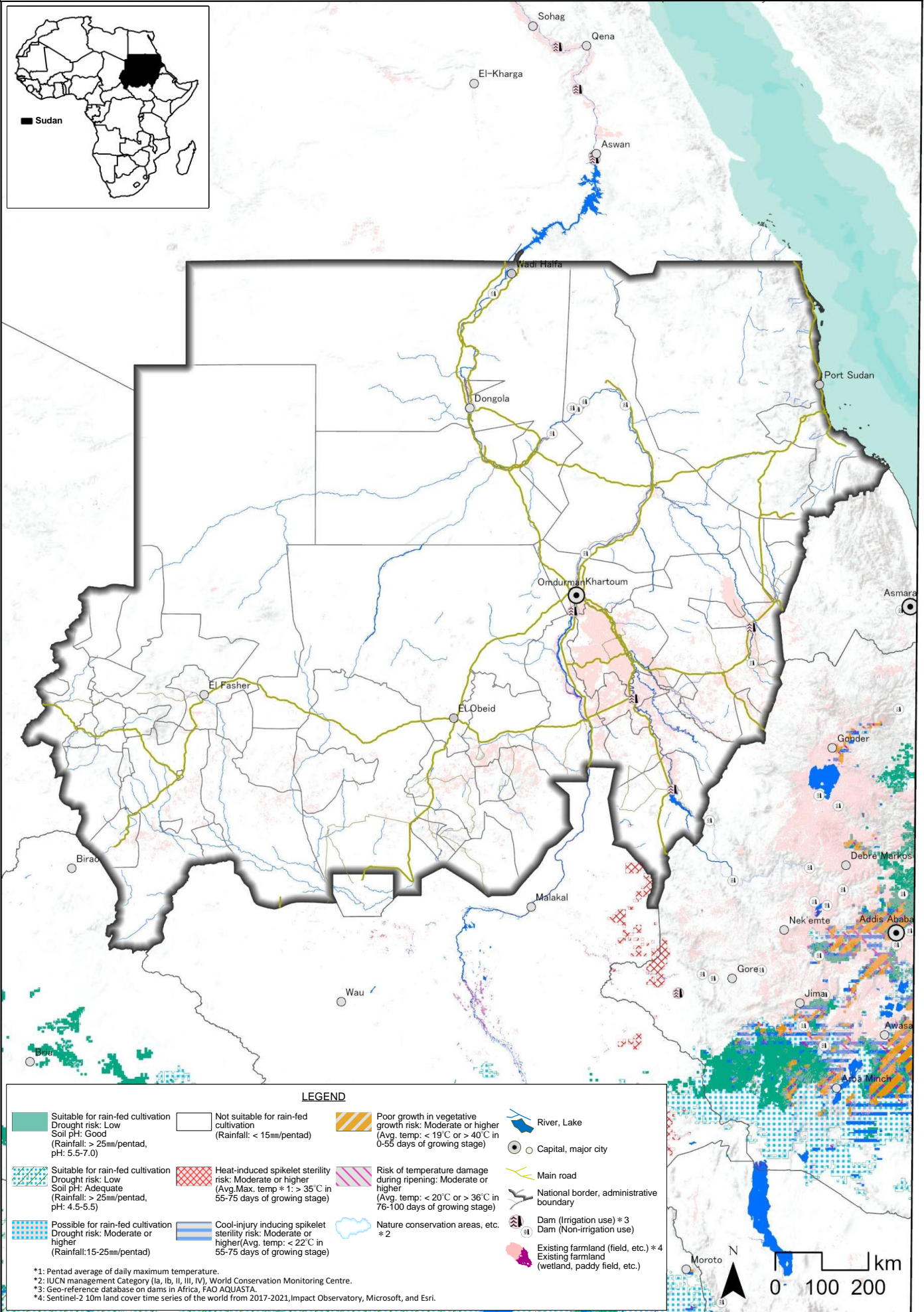
Map of suitable areas for cultivation of upland rice (NERICA) in Sudan

Rainy year 2006 : 1st rainy season sowing



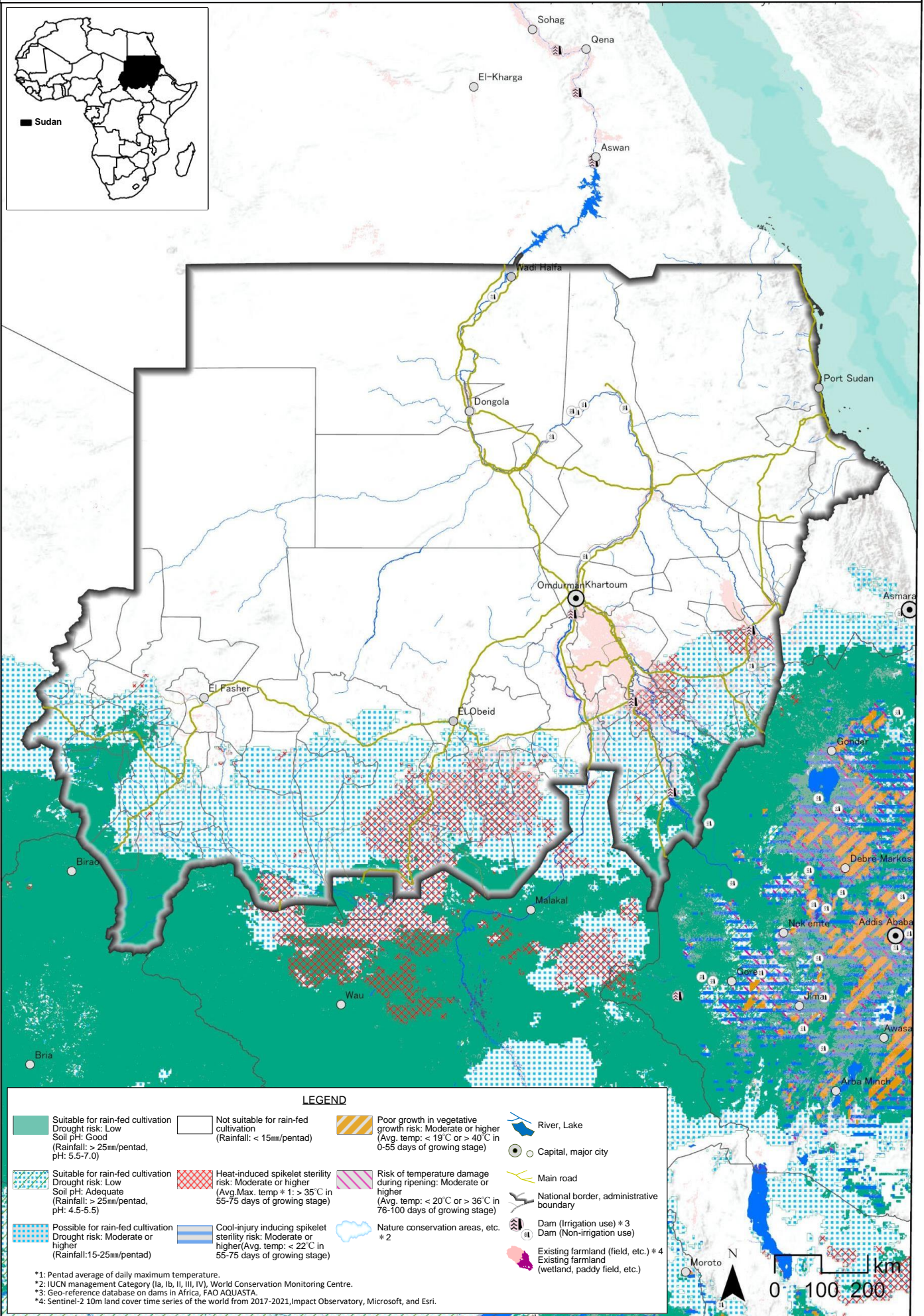
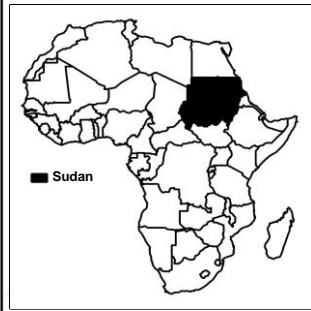
Source: Information collection survey for the expansion of the community-based smallholder irrigation (COBSI) in the Sub-Saharan Africa: final report; Tokyo: Japan International Cooperation Agency: Sanyu Consultants Inc., 2023.2

Map of suitable areas for cultivation of upland rice (NERICA) in Sudan
 Rainy year 2006 : 2nd rainy season sowing



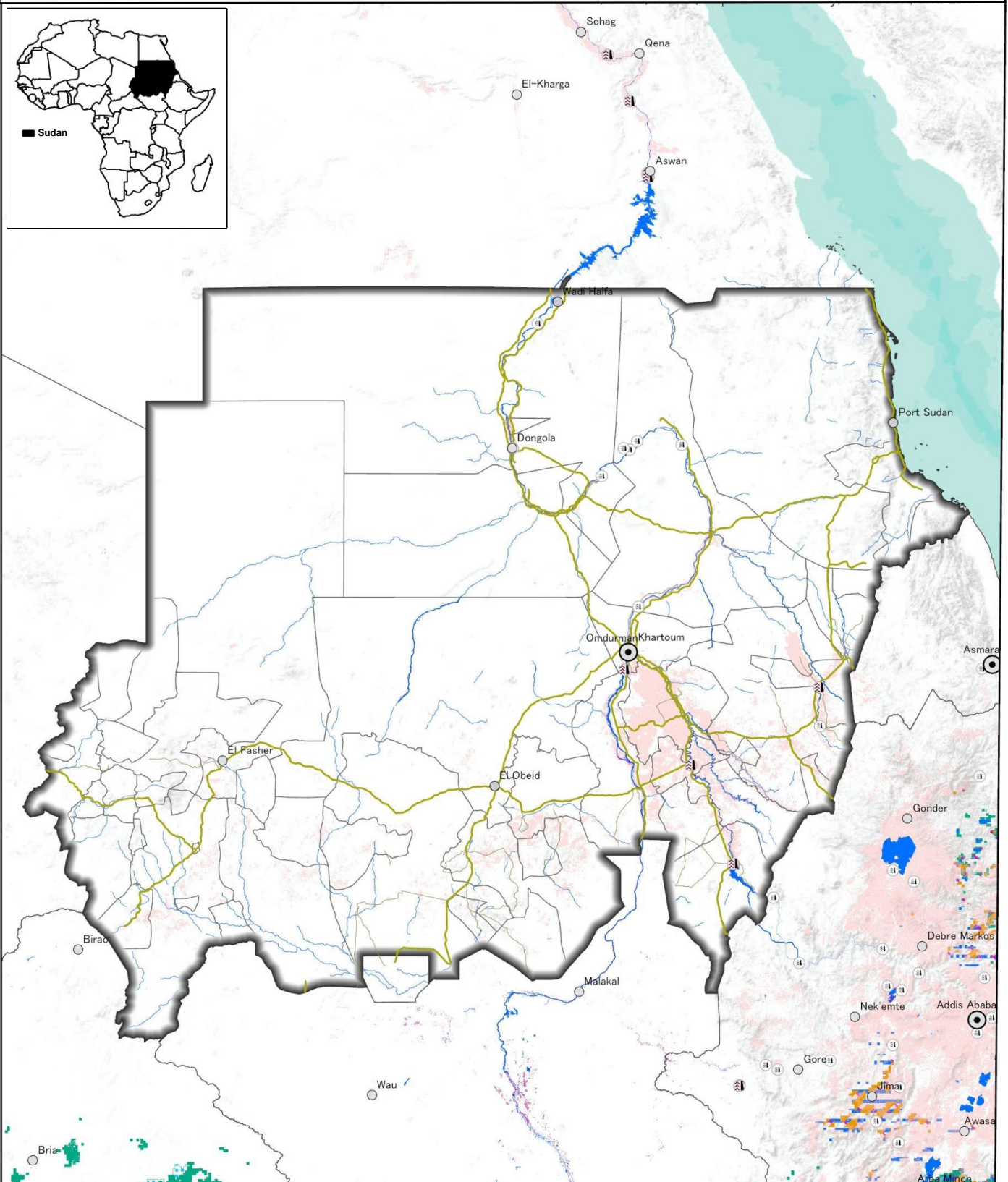
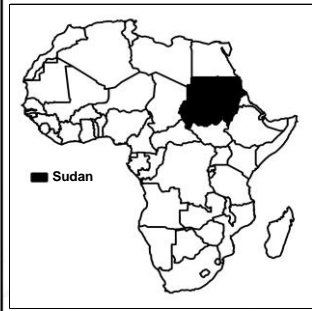
Source: Information collection survey for the expansion of the community-based smallholder irrigation (COBSI) in the Sub-Saharan Africa: final report; Tokyo: Japan International Cooperation Agency: Sanyu Consultants Inc., 2023.2

Map of suitable areas for cultivation of upland rice (NERICA) in Sudan
Drought year 2011 : 1st rainy season sowing



Source: Information collection survey for the expansion of the community-based smallholder irrigation (COBSI) in the Sub-Saharan Africa: final report; Tokyo: Japan International Cooperation Agency: Sanyu Consultants Inc., 2023.2

Map of suitable areas for cultivation of upland rice (NERICA) in Sudan Drought year 2011 : 2nd rainy season sowing



LEGEND

Suitable for rain-fed cultivation Drought risk: Low Soil pH: Good (Rainfall: > 25mm/pentad, pH: 5.5-7.0)	Not suitable for rain-fed cultivation (Rainfall: < 15mm/pentad)	Poor growth in vegetative growth risk: Moderate or higher (Avg. temp: < 19°C or > 40°C in 0-55 days of growing stage)	River, Lake
Suitable for rain-fed cultivation Drought risk: Low Soil pH: Adequate (Rainfall: > 25mm/pentad, pH: 4.5-5.5)	Heat-induced spikelet sterility risk: Moderate or higher (Avg. Max. temp * 1: > 35°C in 55-75 days of growing stage)	Risk of temperature damage during ripening: Moderate or higher (Avg. temp: < 20°C or > 36°C in 76-100 days of growing stage)	Capital, major city
Possible for rain-fed cultivation Drought risk: Moderate or higher (Rainfall: 15-25mm/pentad)	Cool-injury inducing spikelet sterility risk: Moderate or higher (Avg. temp: < 22°C in 55-75 days of growing stage)	Nature conservation areas, etc. * 2	Main road
*1: Pentad average of daily maximum temperature. *2: IUCN management Category (Ia, Ib, II, III, IV), World Conservation Monitoring Centre. *3: Geo-reference database on dams in Africa, FAO AQUASTA. *4: Sentinel-2 10m land cover time series of the world from 2017-2021, Impact Observatory, Microsoft, and Esri.			National border, administrative boundary
			Dam (Irrigation use) * 3 Dam (Non-irrigation use) * 4
			Existing farmland (field, etc.) * 4 Existing farmland (wetland, paddy field, etc.)

