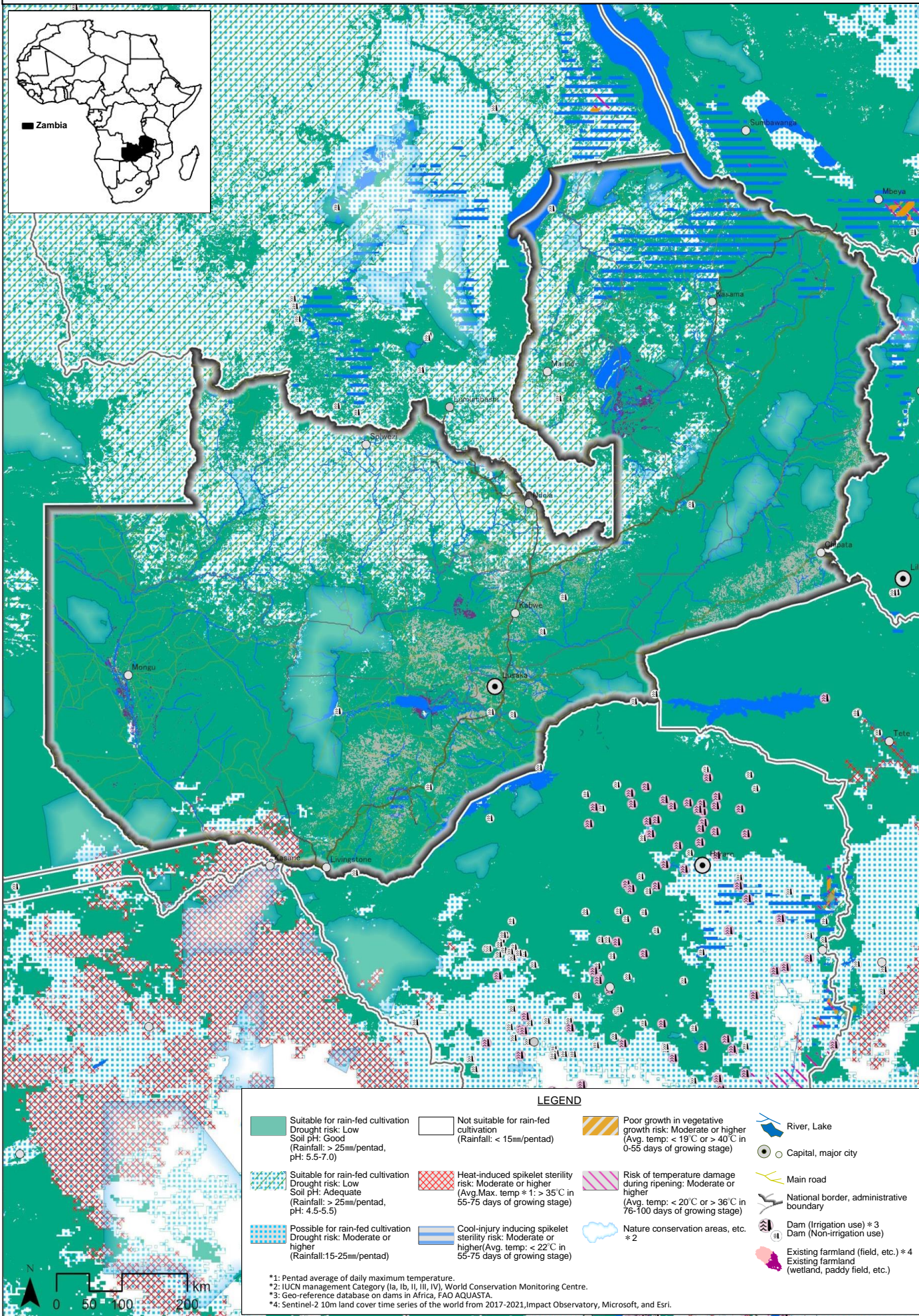
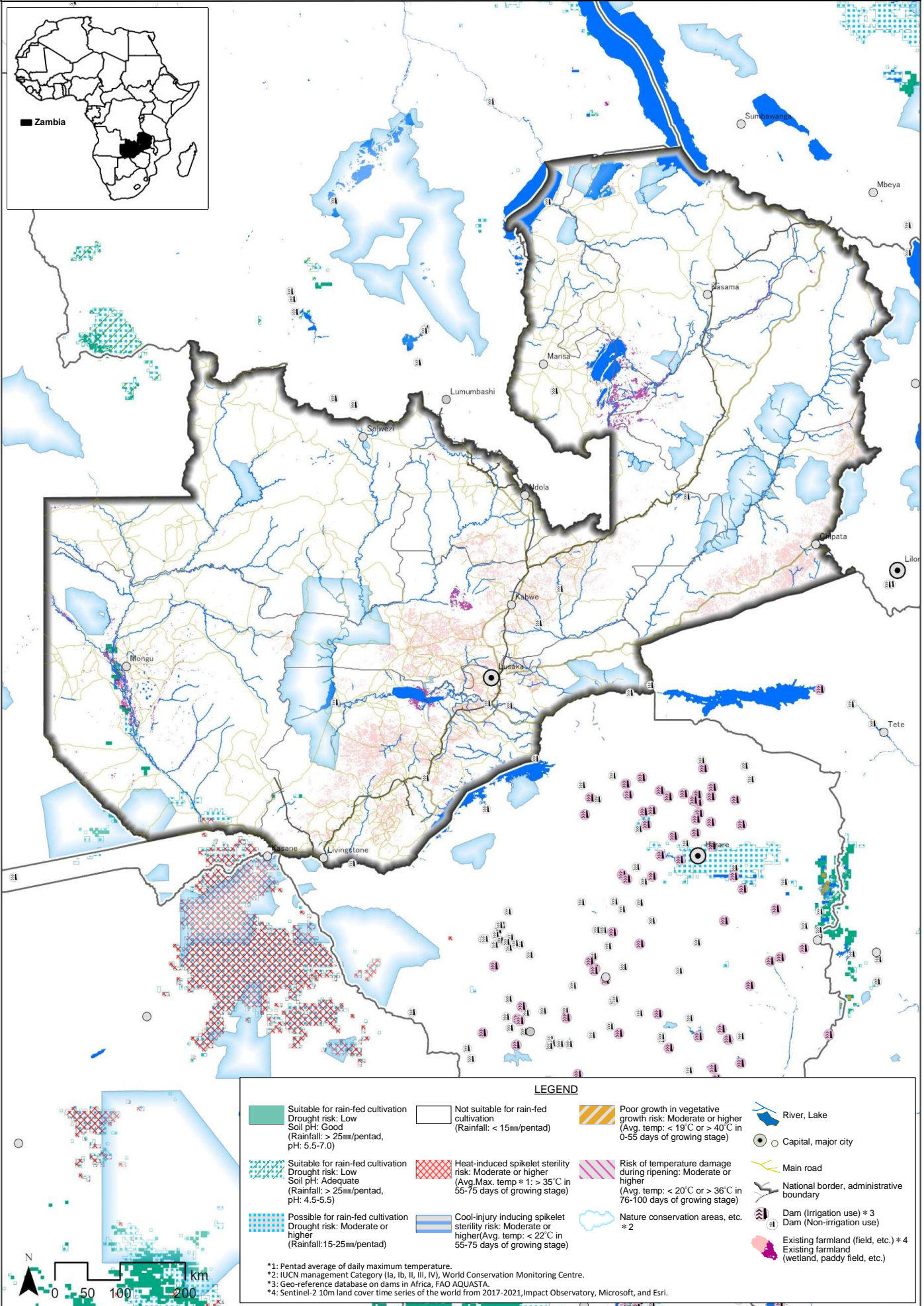


Map of suitable areas for cultivation of upland rice (NERICA) in Zambia  
 Rainy year 2006 : 1st rainy season sowing



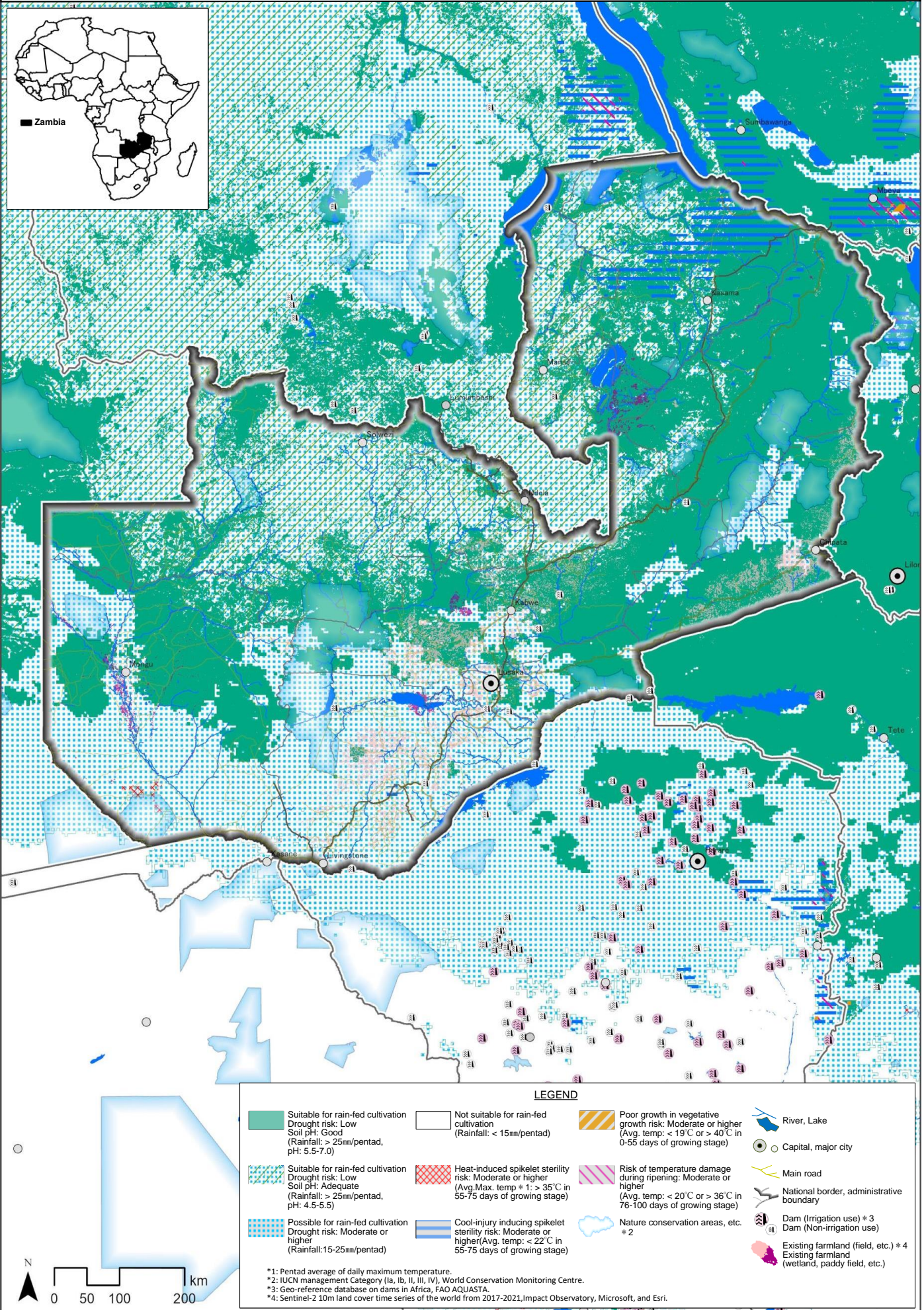
Source: Information collection survey for the expansion of the community-based smallholder irrigation (COBSI) in the Sub-Saharan Africa: final report; Tokyo: Japan International Cooperation Agency: Sanyu Consultants Inc., 2023.2

Map of suitable areas for cultivation of upland rice (NERICA) in Zambia  
 Rainy year 2006 : 2nd rainy season sowing



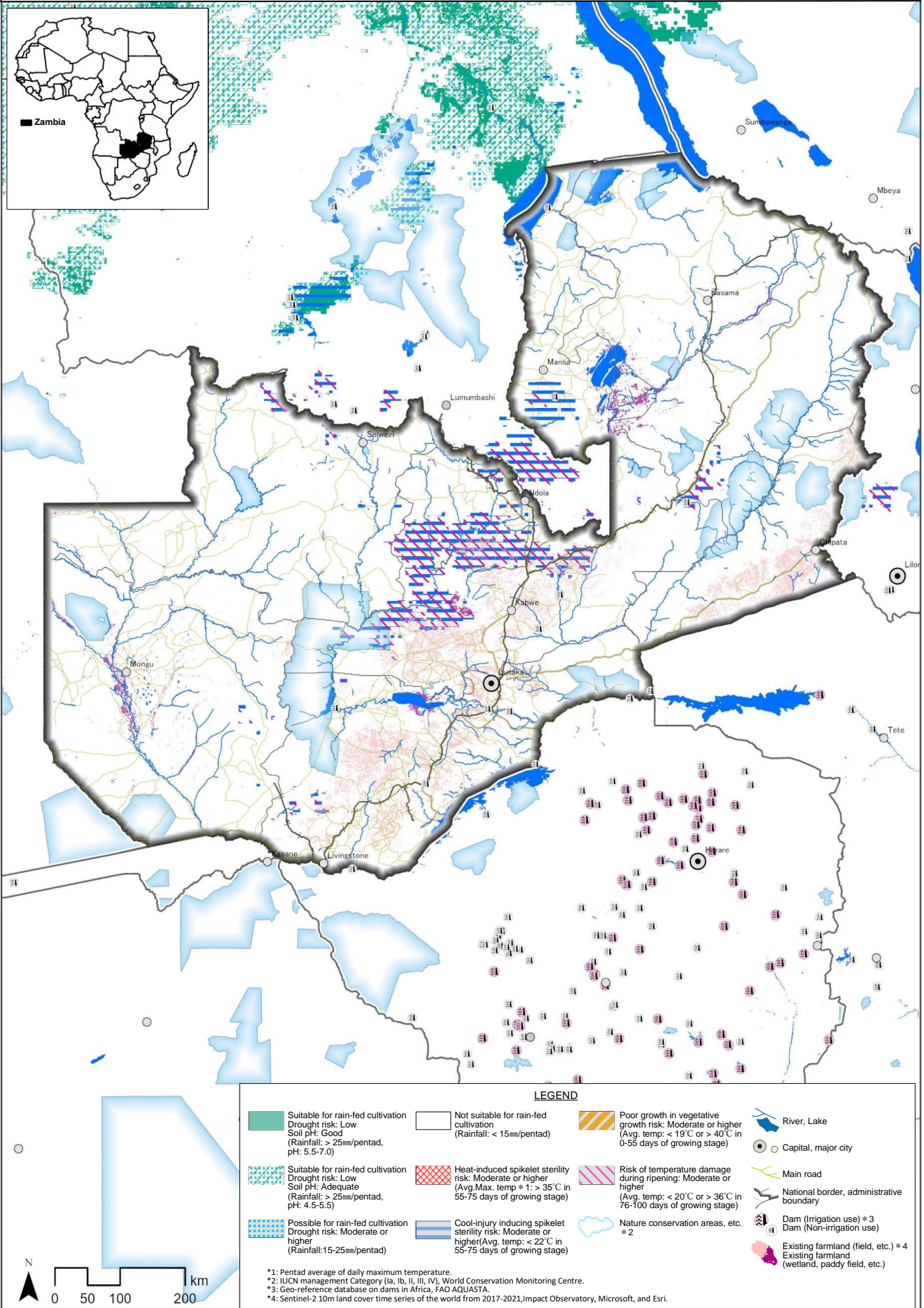
Source: Information collection survey for the expansion of the community-based smallholder irrigation (COBSI) in the Sub-Saharan Africa: final report; Tokyo: Japan International Cooperation Agency: Sanyu Consultants Inc., 2023.2

Map of suitable areas for cultivation of upland rice (NERICA) in Zambia  
Drought year 2015 : 1st rainy season sowing



Source: Information collection survey for the expansion of the community-based smallholder irrigation (COBSI) in the Sub-Saharan Africa: final report; Tokyo: Japan International Cooperation Agency: Sanyu Consultants Inc., 2023.2

# Map of suitable areas for cultivation of upland rice (NERICA) in Zambia Drought year 2015 : 2nd rainy season sowing



Source: Information collection survey for the expansion of the community-based smallholder irrigation (COBSI) in the Sub-Saharan Africa: final report; Tokyo: Japan International Cooperation Agency: Sanyu Consultants Inc., 2023.2